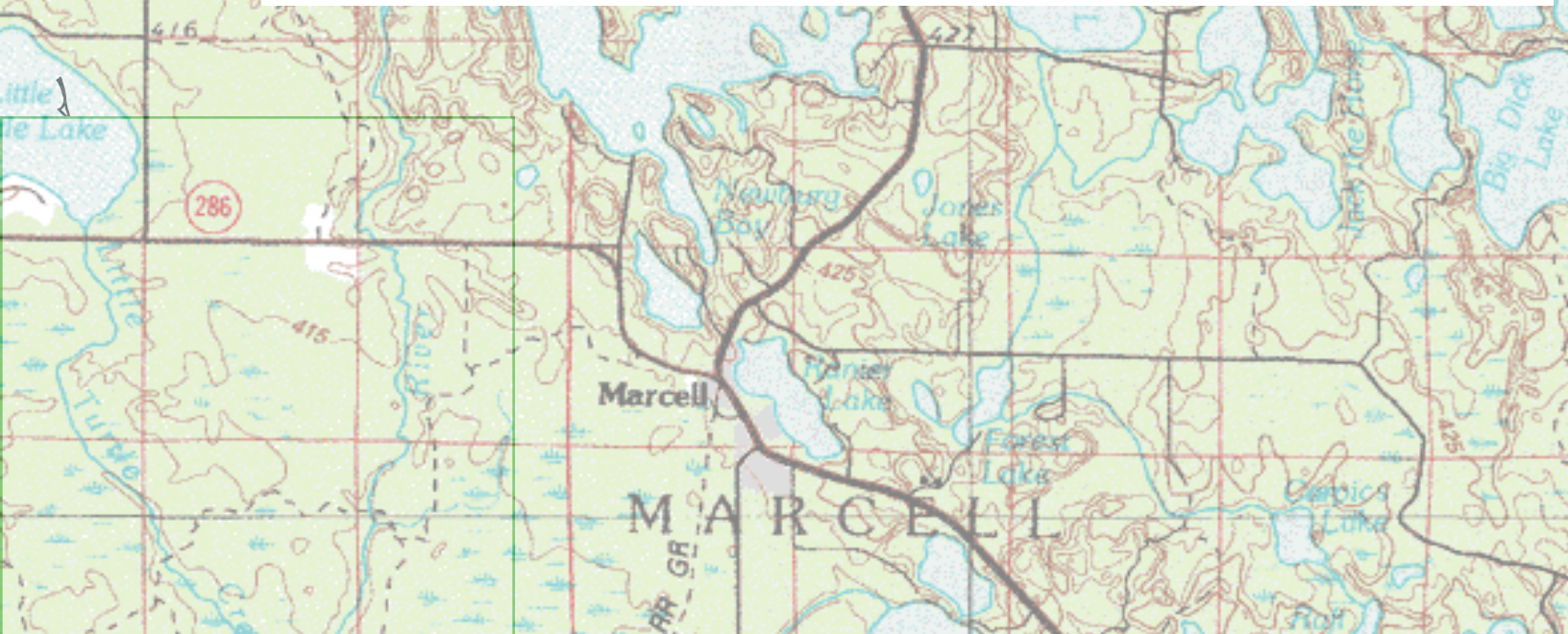


★ MN  CAMP GUIDE ★

Chippewa National Forest

Guide to (Designated) Dispersed Camping





1 FOREST 76 dispersed sites **\$FREE** 0% reservable

THE CHIPPEWA.

The first of two national forests in the state, established in 1908.

Located in the heart of Northern Minnesota these 666,000 acres contain more water than any other national forest in the nation. Over 1,300 lakes including some of the state's largest - Cass, Leech and Winnibigoshish, host innumerable shoreline campsites, public boat launches, carry-in paddle accesses and a diversity of local fisheries. A few of the forest's best kept secrets include deep, spring fed lakes of Caribbean aquamarine color and clarity. 923 miles of rivers and streams, including the most wild & scenic portions of the Mississippi River invite the paddle.

Nesting it all is a diversity of woodland, mixes of old growth conifer, aspen groves, birch and sugar maple - basswood bush. Here are found some of the largest and most mature examples of individual tree species and native plant communities.

Threaded by gravel forest roads, 41 miles of paved bike trail, 298 miles of non-motorized hiking or biking trails including Suomi Hills, Trout Lake, Shingobee, Cut Foot Sioux and a transect by the North Country National Scenic Trail - all delivering the outdoorist deeper into remote and beautiful backwoods experiences.

The natural and scenic quality, notable history and access to wildlife and recreation is of some of the highest caliber the state of Minnesota has to offer. Many of your days are deserved to explore it fully. Those nights necessary to accomplish this, will be best spent with the service of this guide to the wild but comfortable camping experiences introduced below.

What this guide is *not* about?

This guide is not about the 15 developed drive-in car campgrounds in the forest, with their developed amenities offered in exchange for a nightly fee.

Neither is this guide about the many forest roads and land acres available for *dispersed camping* opportunities, which are legally allowable anywhere on public land that is at least 150 feet away from any road, trail or otherwise improved area. This means the undeveloped wild, with no amenities whatsoever. Something that is certainly allowed in this national forest.

What this guide *is* about?

This guide is about a collection of **76 designated dispersed campsites** in the Chippewa National Forest, including those packaged and promoted by the US Forest Service in their *Dispersed Camping Site Map Index* (the left hand pages of this guide).

These campsite locations and experiences are;

- **free to use** (they are not within one of the 15 fee car campgrounds) for up to 14 days
- **offer moderate amenities**, possibly but probably (a fire ring, toilet, picnic table, bench, boat landing, dock)
- and are located in a desirable position (cleared and level tent space, near a water feature or trail)

At many of these campsites, your car can join you, with all of the extra equipment, security and easy exit strategy they provide.

For many others, you will need to rely on your comfort and capability in being remote; a mile down a hiking trail or out on the water in whatever conditions or events are presented.

At all of these campsite experiences, you will need to trust your equipment and ability for;

- Treating water from a natural source
- Keeping your food away from wild animals (hanging bear bags, using bear boxes or barrels)
- Preparing food in the backcountry (using stove systems, if conditions don't allow a fire)
- Packing out everything you pack in (especially your trash)

Camping in the designated dispersed campsites of the Chippewa take you away from the company of campground crowds and offer you the basic furnishings of a campsite for no cost, other than a willingness to exercise some extra self-reliance and head a little deeper into the wilder corners of this amazing national forest.

WHY THIS GUIDE?

There are several sources of information about these designated dispersed campsites in the Chippewa National Forest. They each have strengths and limitations.

1. Chippewa National Forest 'Dispersed Camping Site Index'

These are published online in a series of maps titled the 'Dispersed Camping Site Index'.

There are 23 map pages in this index. Zoomed in on a local area, they depict the location of 69 particular campsites with GPS coordinates and well labeled road networks. They also include present amenities, number of sites and suggested activities nearby. Campsite designations combine a number and a letter - as its location corresponds to the area of the forest. Ex. B35, B is for Blackduck area.

After paying a visit to every campsite in the Index, this guide has added geographically relevant names, updated descriptions of notable features, a quality rating and photos. Campsites are also classified as car (drive-in), backpacking (hike-in) or paddle-in approaches, as best fits their character having experienced them on the ground.

Some campsites in the *Index* have been found not to exist, or to have gone feral. Other campsites have been found to exist, but were not in the *Index*. They are included here.

The information in this Minnesota Camp Guide updates and supplements the *Dispersed Camping Site Index maps*. These have been combined and are available to you in a printable PDF, this makes a reliable physical resource to be used offline where cell service and internet become unavailable.



The pages you have here are the USDA's 'Dispersed Camping Site Index' supplemented with extra detailed information as presented on the webpages of Minnesota Camp Guide. All official National Forest documentation is unaltered, and clearly attributed below their green page headers. Information from Minnesota Camp Guide includes the campsite descriptions on the backs of the Site Index pages. They are combined here in this printable document so that you may have these resources in physical form when exploring the forest away from internet connections and electrical outlets.

2. Chippewa National Forest Print Map

Available to order from the US Geological Survey.

This is a fantastic resource for in the field. It's large enough to depict remote forest roads, hiking trails, fee campgrounds, boat launches and carry in access to paddling venues. Most importantly, it identifies exactly what land is public (state forest or national forest land) versus private.

What is not included on this map? These 76 designated dispersed campsites. Grab a permanent marker, and transcribe them from this guide, for a map resource that is impervious to physical abuse, water damage and won't run out of battery life or internet connection.



3. Local Area Site Maps

Physical signage erected at certain trailheads and boat launches may host maps that include campsites no longer posted or promoted on the national forest website.

Where these campsites continue to exist in usable conditions, they have been added to this Minnesota Camp Guide.

4. Resource Pages

These physical or digital PDF pages are created to provide more in depth information of local area venues. They may be found printed and distributed in visitor or information offices, or online, linked on the national forest website or uncovered through search engines.

Where these depict campsites that continue to exist in usable conditions, they have been added to this Minnesota Camp Guide.

HOW TO USE THIS GUIDE







This guide introduces you to **76 individual 'designated' dispersed campsites** in the Chippewa NF.

- **An overview map** depicts the location of the five forest areas (Blackduck, Cass, Lake, Deer River, Marcell and Walker) and the 'Site Map Index' pages which are included in each area.

--- **An interactive satellite map** to explore. ---

The default map layer includes all campsites, but you may toggle three other layers to filter by approach

- dispersed car camping (green)
 - dispersed backpack camping (orange)
 - dispersed paddle camping (blue)
- **A catalog** listing of every 'designated' dispersed campsite in the Chippewa. Here is an interpretive example.

Map #	SITE Name	★ Rating						
Site description.								
<ul style="list-style-type: none">• GPS coordinates• Approach (location, quality, distance)• Amenities included.• Other relevant notes.								

The *map number*, in black, corresponds to the 'Site Map Index' page this campsite is on. (Forest Service resource, [available online](#).)

The *site designation* (letter and number) as named by the US Forest Service. These are color coordinated by the primary approach (**car**, **backpack**, **paddle**).

The *geographic name*, as given unofficially by this project.

A *quality rating* of 1 - 5 stars.

These ratings are the biased perspective of one individual. Taking into account mostly, the quality of approach (distance and difficulty), the campsite's scenery, amenities, space and access to attractive water bodies. Anything 3 and up, you're in for a good time.

Approach classification symbols indicating how to approach the campsite, in order of best preference.

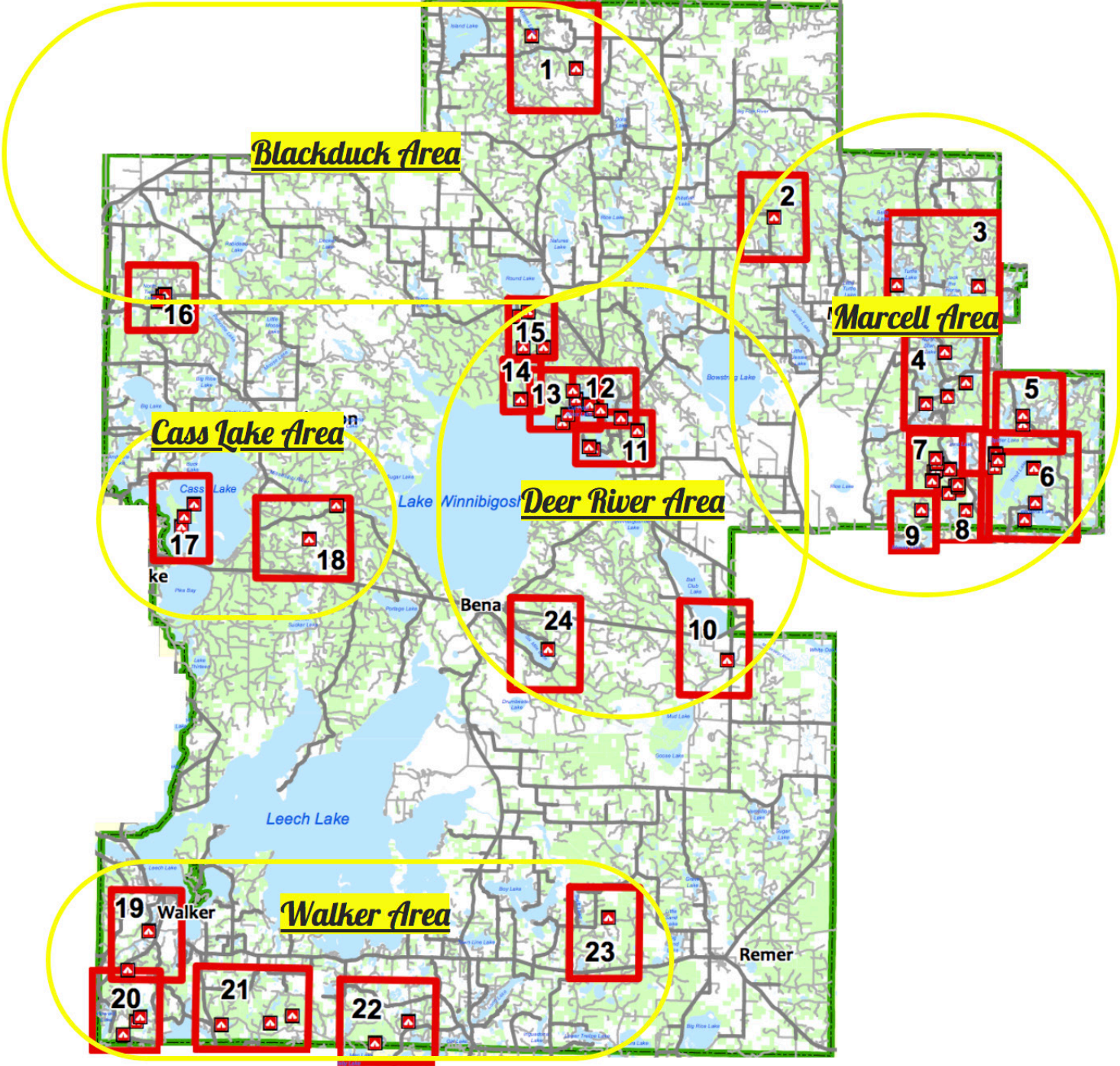
- **Car:** able to drive in to campsite, or walk- in (a distance less than 200 yards).
- **Backpack:** requires a distance from trailhead parking over 200 yards, or accessible by a hiking trail or trail system.
- **Boat:** able to be reached by watercraft from another point on the water body where this campsite is located.

A description of the campsite experience, including;

- Coordinates, included amenities, approaches (identification, quality, distances) and other relevant notes.

Chippewa National Forest

'Designated' Dispersed Camping Site Map Index





United States Department of Agriculture

Chippewa National Forest

RECREATION OPPORTUNITY GUIDE

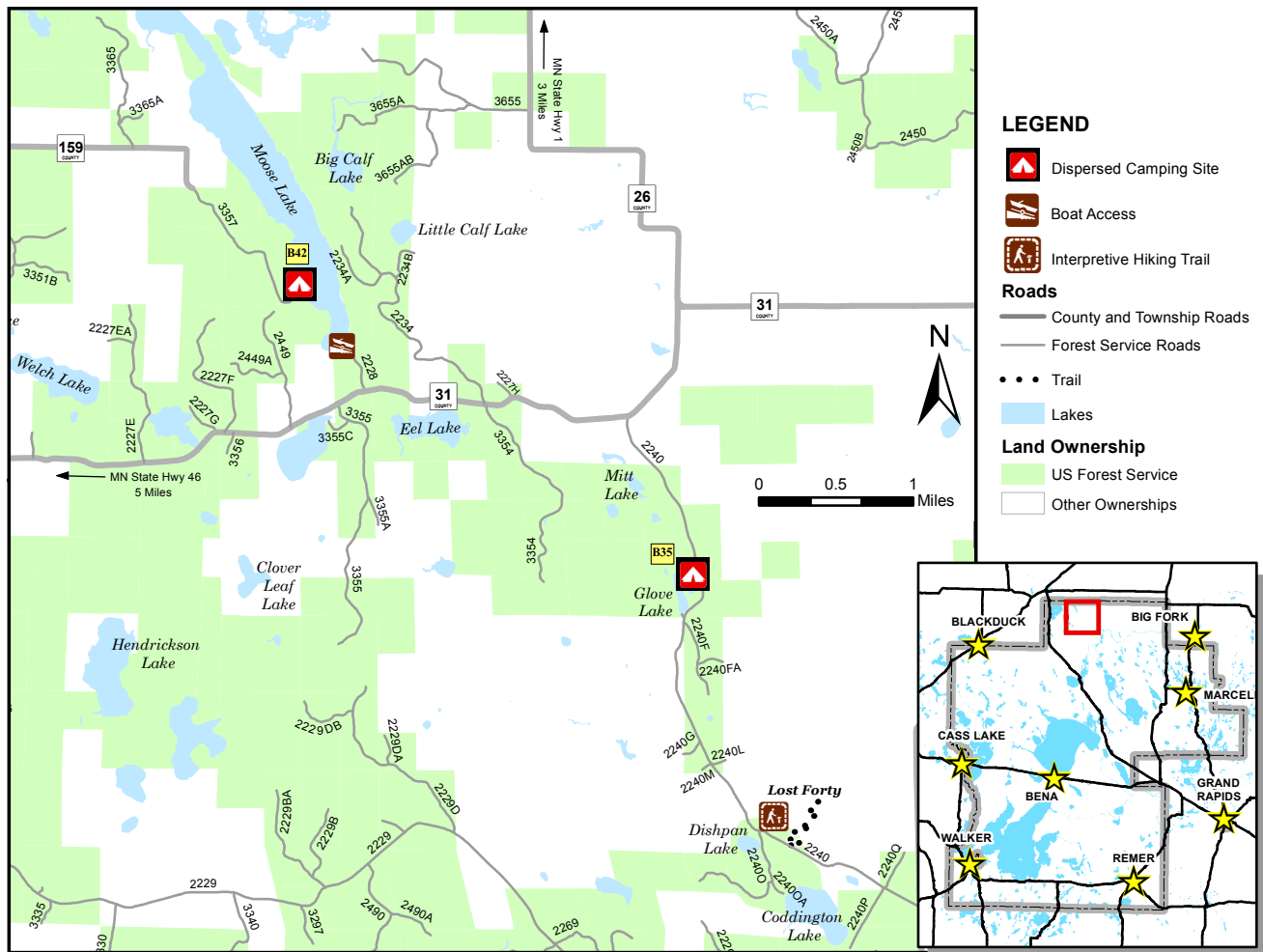
DISPERSED CAMPING

4/2018

MAP NO. 1

Dispersed Camping Site

	Longitude	Latitude	Toilet	Fire Pit	Number of Camping Sites	Activities
B35	94° 5' 59.618" W	47° 47' 32.447" N	None	Rock	1 Site	
B42	94° 9' 19.258" W	47° 49' 8.519" N	None	None	1 Site	



Hiking Fishing Water Access

For information on Leave No Trace, go to www.LNT.org or call 1-800-332-4100



Forest Service

Blackduck Ranger District
417 Forestry Drive Blackduck, MN 56630
Voice: (218) 835-4291 Fax: (218) 835-3132
www.fs.usda.gov/Chippewa

The USDA Forest Service makes no warranty, expressed or implied regarding the data displayed on this map, and reserves the right to correct, update, modify, or replace this information without notification.

USDA is an equal opportunity provider, employer, and lender.

Blackduck Area

1 **B35** Glove Lake ★ 4



Scenic site on a hilltop on the shore of Glove Lake. Good shoreline and water for swimming.

- 94° 5' 59.618" W 47° 47' 32.447" N
- No difficulty on approach; Forest Road 2240.
- Space for 2-3 tents, and trees for hammocks.
- Parking space is limited.
- No toilet.
- Yes, rock fire ring.



1 **B42** Moose Lake ★ 3



A lush, grassy and open to the stars space on the shore of Moose Lake. Not much of a boat landing, steep shoreline bank.

- 94° 9' 19.258" W 47° 49' 8.519" N
- Very difficult approach road, Forest Road 3357. Beaver dam washouts and deep pools, inaccessible to most vehicles. Hike-in of ~ 1 mile.
- Paddle .5 mile in from public boat launch at south end of Moose Lake.
- Primitive amenities include a dug out fire pit.





United States Department of Agriculture

Chippewa National Forest

RECREATION OPPORTUNITY GUIDE

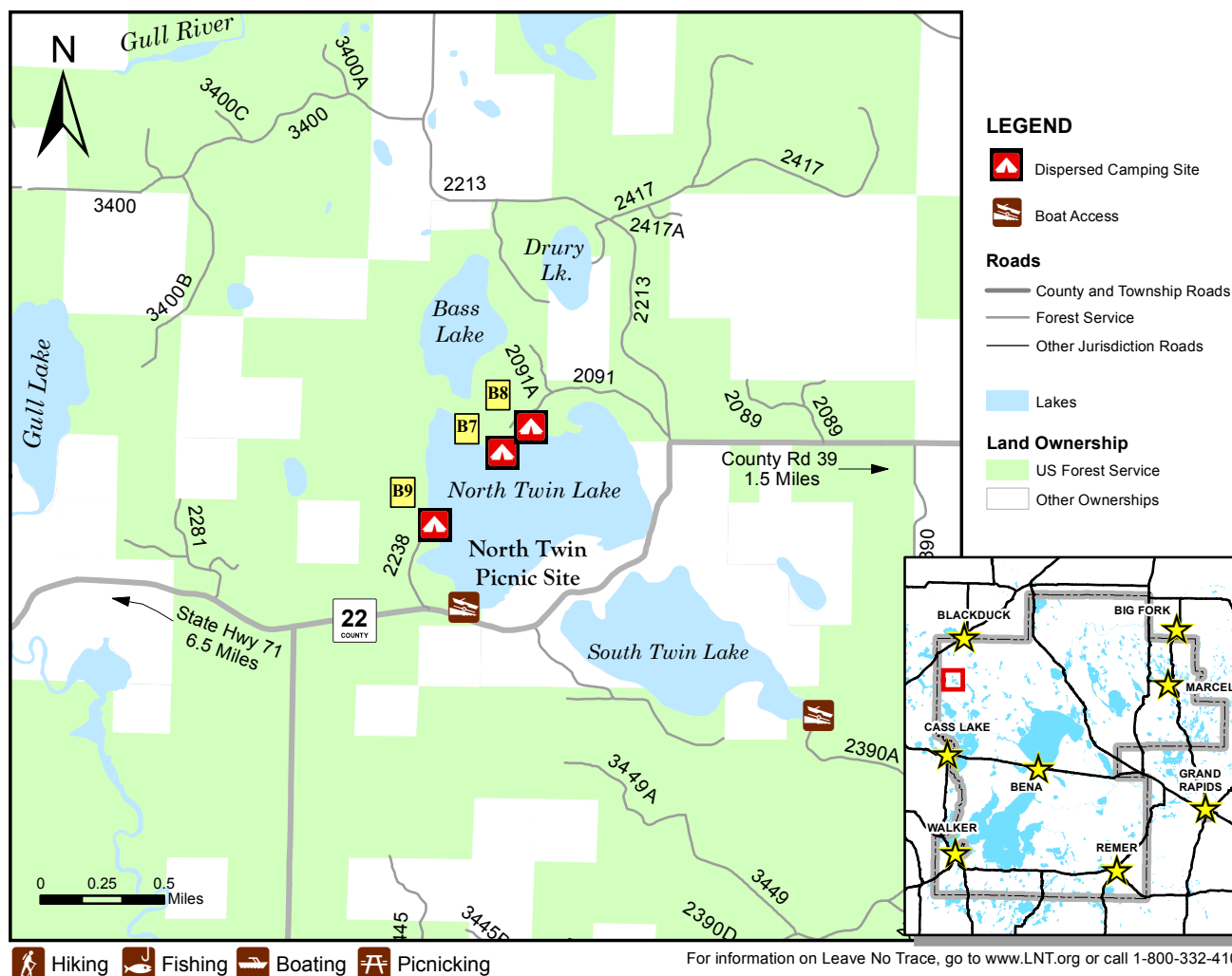
DISPERSED CAMPING

4/2018

MAP NO. 16

Dispersed Camping Site

	Longitude	Latitude	Toilet	Fire Pit	Number of Camping Sites	Activities
B7	94° 36' 10.780" W	47° 35' 51.502" N	None	Rock	1 Site	
B8	94° 36' 1.911" W	47° 35' 57.198" N	None	Metal Grate	1 Site	
B9	94° 36' 31.357" W	47° 35' 35.957" N	None	Rock	1 Site	



Hiking Fishing Boating Picnicking

For information on Leave No Trace, go to www.LNT.org or call 1-800-332-4100



Forest Service

Blackduck Ranger District
 417 Forestry Drive Blackduck, MN 56630
 Voice: (218) 835-4291 Fax: (218) 835-3132
www.fs.usda.gov/Chippewa

The USDA Forest Service makes no warranty, expressed or implied regarding the data displayed on this map, and reserves the right to correct, update, modify, or replace this information without notification.

USDA is an equal opportunity provider, employer, and lender.

Blackduck Area

16 B7 North Twin Hike-In ★4



Open but shaded, breezy peninsula on the shore of North Twin Lake. Good shoreline access to water suitable for swimming.

- 94° 36' 10.780" W 47° 35' 51.502" N
- Hike in from car parking is **.10 miles**.
- Semi rugged approach on Forest Road 2091.
- Space for several tents.
- No toilet.
- Yes, rock fire ring.
- Overflow camping up the wooded hill with a second rock fire ring.



16 B8 North Twin ★4



A roomy and grassy shoreline with excellent sand-bottomed swimming area. Narrow between hillside and water but space for 4-5 tents. Can't drive into directly, requires short carry in. Rope swing at site.

- 94° 36' 1.911" W 47° 35' 57.198" N
- Requires a 40 yard carry-in from parking up a hill.
- Paddle in .6 miles from public boat launch in SW corner of lake.
- No toilet. Yes, high quality rock fire ring.



16 B9 North Twin Remote ★3



Smaller grassy space with room for a couple of camping tents along the raised shoreline of lake. Fine swimming, but vegetated. Adjacent pine grove for hammocks.

- 94° 36' 31.357" W 47° 35' 35.957" N
- Closed gate on approach road, Forest Road 2238. Requires a **hike-in of ~ 1 mile**, through very vegetated unmaintained trail.
- Paddle in .35 miles from public boat launch in SW corner of lake.
- No toilet. Yes, rock fire ring.





United States Department of Agriculture

Chippewa National Forest

RECREATION OPPORTUNITY GUIDE

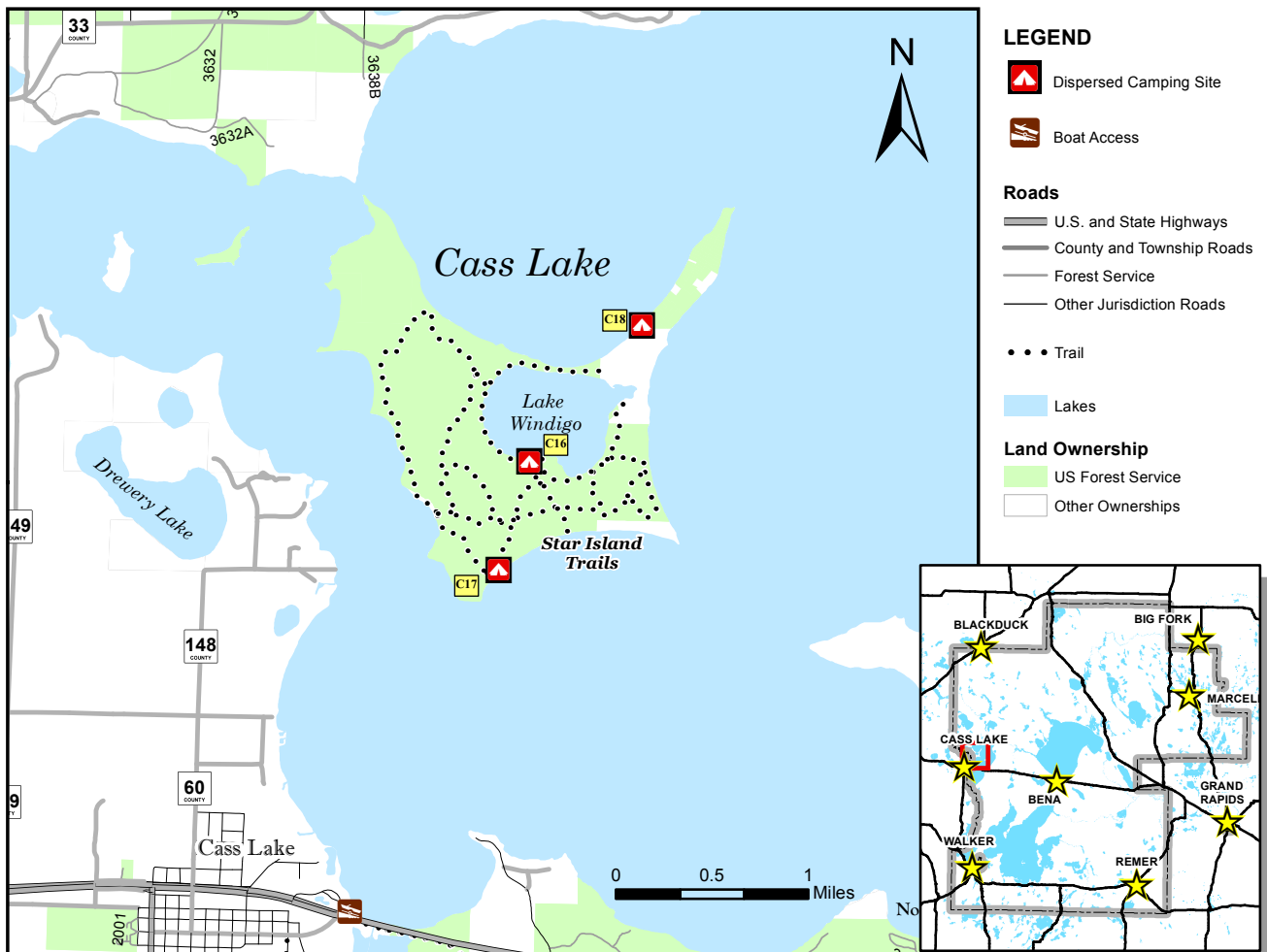
DISPERSED CAMPING

4/2018

MAP NO. 17

Dispersed Camping Site

	Longitude	Latitude	Toilet	Fire Pit	Number of Camping Sites	Activities
C16	94° 34' 16.891" W	47° 24' 54.516" N	Wilderness Pit	None	1 Site	
C17	94° 34' 28.023" W	47° 24' 25.076" N	Wilderness Pit	Rock	2 Sites	
C18	94° 33' 32.899" W	47° 25' 32.093" N	Wilderness Pit	Metal Grate	1 Site	



Hiking Fishing Boating Picnicking

For information on Leave No Trace, go to www.LNT.org or call 1-800-332-4100



Forest Service

Blackduck Ranger District
 417 Forestry Drive Blackduck, MN 56630
 Voice: (218) 835-4291 Fax: (218) 835-3132
www.fs.usda.gov/Chippewa

The USDA Forest Service makes no warranty, expressed or implied regarding the data displayed on this map, and reserves the right to correct, update, modify, or replace this information without notification.

USDA is an equal opportunity provider, employer, and lender.

Cass Lake Area

17 C16 Lake Windigo ★ 4



A very distinct campsite - 1 of only 26 recursive lakes on an island on a lake in the entire world. Space for several tents on the pine needle carpeted ground below mature trees. Scenic and good swimming area.

- 94° 34' 16.891" W 47° 24' 54.516" N
- Paddle ~ 4 miles from public launch west of Star Island on CR 148. Portage into Lake Windigo on northern shore.
- Access or approach via 6 miles of Star Island hiking trail system.
- Yes, wilderness toilet and metal fire ring.



17 C17 Star Island, S. Shore ★ 4



A wide open grassy acreage adjacent the South Shore beach of Star Island. Not private, but you may prefer the likely present boat party. Room for many tents, this should even be considered multiple campsites.

- 94° 34' 28.023" W 47° 24' 25.076" N
- Paddle ~ 1 mile from public launch west of Star Island on CR 148.
- Access or approach via 6 miles of Star Island hiking trail system.
- Yes, wilderness toilets and metal fire rings.



17 C18 Star Island, N. Shore ★ 4



Two campsites, right next to each other. Share a small beach (with rock fire ring) on north shore of O'Neils Point. Grassy space tucked back in the trees for several backpacking tents.

- 94° 33' 32.899" W 47° 25' 32.093" N
- Paddle ~ 4 miles from public launch west of Star Island on CR 148.
- Access or approach via 6 miles of Star Island hiking trail system.
- Yes, wilderness toilets and metal fire rings.





United States Department of Agriculture

Chippewa National Forest

RECREATION OPPORTUNITY GUIDE

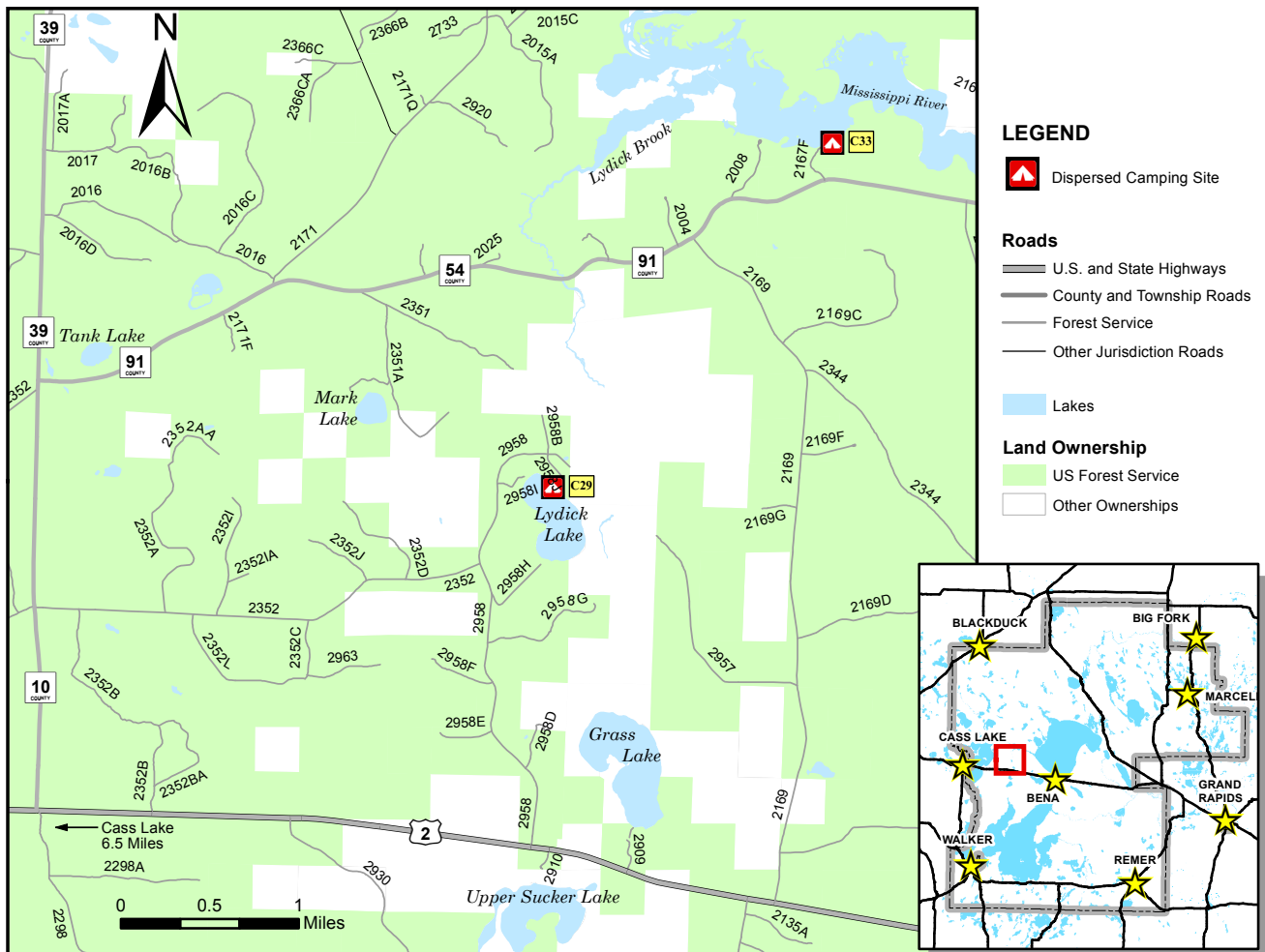
DISPERSED CAMPING

4/2018

MAP NO. 18

Dispersed Camping Site

	Longitude	Latitude	Toilet	Fire Pit	Number of Camping Sites	Activities
C29	94° 25' 5.083" W	47° 23' 54.508" N	None	Rock	1 Site	
C33	94° 23' 7.082" W	47° 25' 36.891" N	None	Metal Grate	1 Site	



Hiking Fishing Water Access to River

For information on Leave No Trace, go to www.LNT.org or call 1-800-332-4100



Forest Service

Blackduck Ranger District
 417 Forestry Drive Blackduck, MN 56630
 Voice: (218) 835-4291 Fax: (218) 835-3132
www.fs.usda.gov/Chippewa

The USDA Forest Service makes no warranty, expressed or implied regarding the data displayed on this map, and reserves the right to correct, update, modify, or replace this information without notification.

USDA is an equal opportunity provider, employer, and lender.

Cass Lake Area

18 C29 Lydick Lake ★ 5



Absolutely top notch, super spacious, cedar shaded shoreline with excellent views of Lydick Lake. Plenty of access to sandy swimming. Could be considered two campsite sections, partitioned by shrubbery,

- 94° 25' 5.083" W 47° 23' 54.508" N
- No difficulty on approach; Forest Road 2958.
- Space for many tents, several campers and trees for hammocks.
- Plenty of parking space.
- No toilet.
- Yes, multiple rock fire rings.

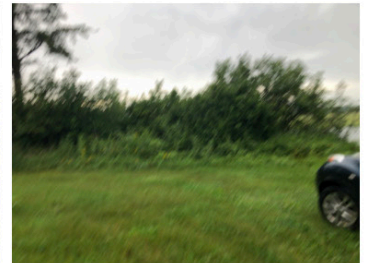


18 C33 Mississippi River ★ 3



Moderately sized, grassy and open space alongside the vegetated riverbank of the Mississippi as it flows between Cass Lake and Winni. Narrow opening amongst cattails for paddle craft access.

- 94° 23' 7.082" W 47° 25' 36.891" N
- No difficulty on approach; Forest Road 2167F.
- Space for 2-3 tents.
- Parking space is limited.
- No amenities.
- Limited but pleasant view of river plain.





United States Department of Agriculture

Chippewa National Forest

RECREATION OPPORTUNITY GUIDE

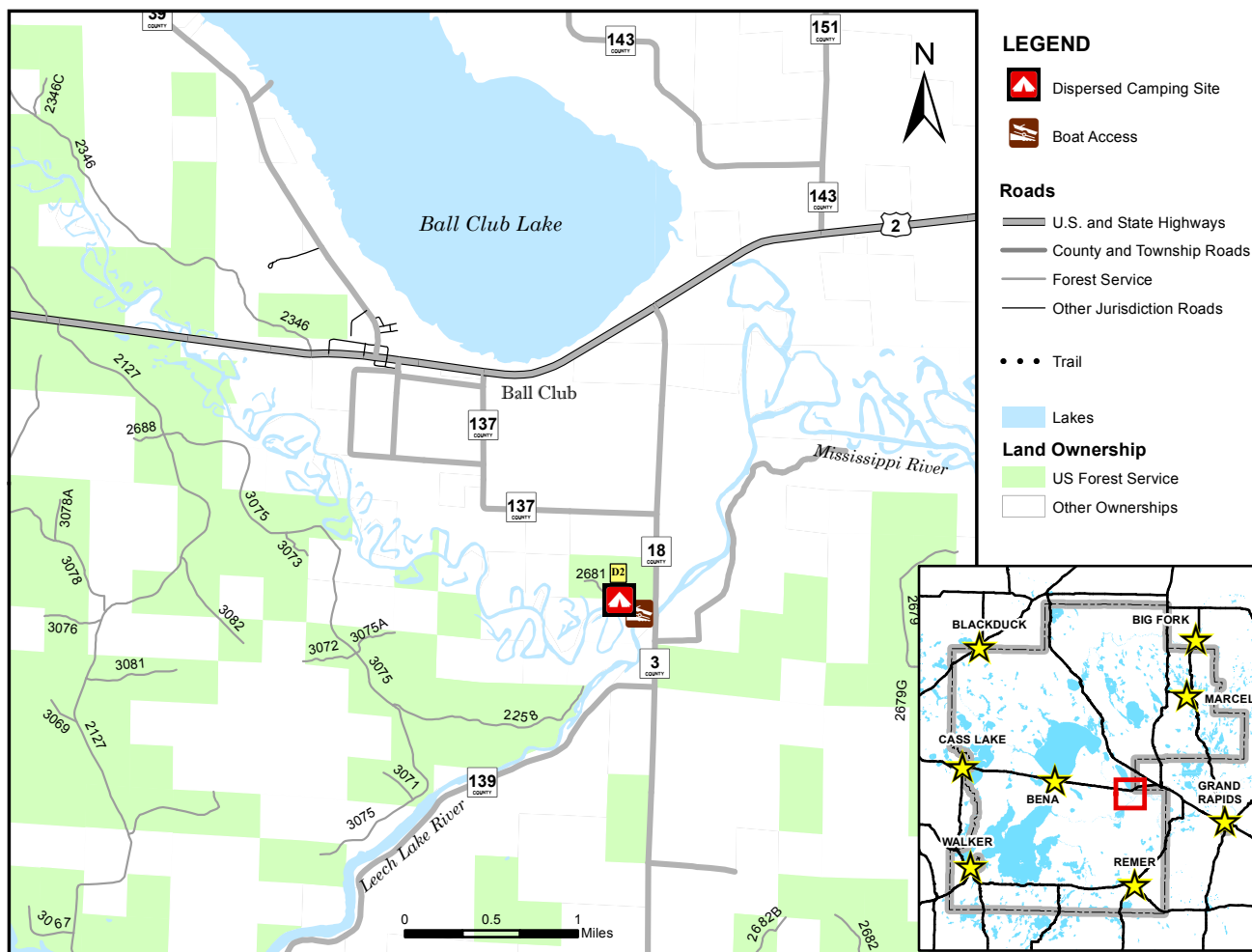
DISPERSED CAMPING

4/2018

MAP NO. 10

Dispersed Camping Site

	Longitude	Latitude	Toilet	Fire Pit	Number of Camping Sites	Activities
D2	93° 54' 15.530" W	47° 18' 9.397" N	None	None	1 Site	



Hunting Fishing Boating Picnicking

For information on Leave No Trace, go to www.LNT.org or call 1-800-332-4100



Forest Service

Deer River Ranger District
 1235 Division Street Deer River, MN 56636
 Voice: (218) 246-2123 Fax: (218) 246-9743
www.fs.usda.gov/Chippewa

The USDA Forest Service makes no warranty, expressed or implied regarding the data displayed on this map, and reserves the right to correct, update, modify, or replace this information without notification.

USDA is an equal opportunity provider, employer, and lender.

Deer River Area

10 **D2** Mississippi River ★ 4



Very spacious and open grassy space with room for large groups or multiple parties. Very enjoyable space if clean, with several large oaks and open view of a narrow section of Mississippi River. A steep bank separates you from a tiny sand bar and swimming.

- 93° 54' 15.530" W 47° 18' 9.397" N
- No difficulty on road approach from Highway 18.
- Space for many tents, large groups, campers, trailers.
- Parking space is not limited.
- Open ground used for fires and there is a toilet.





United States Department of Agriculture

Chippewa National Forest

RECREATION OPPORTUNITY GUIDE

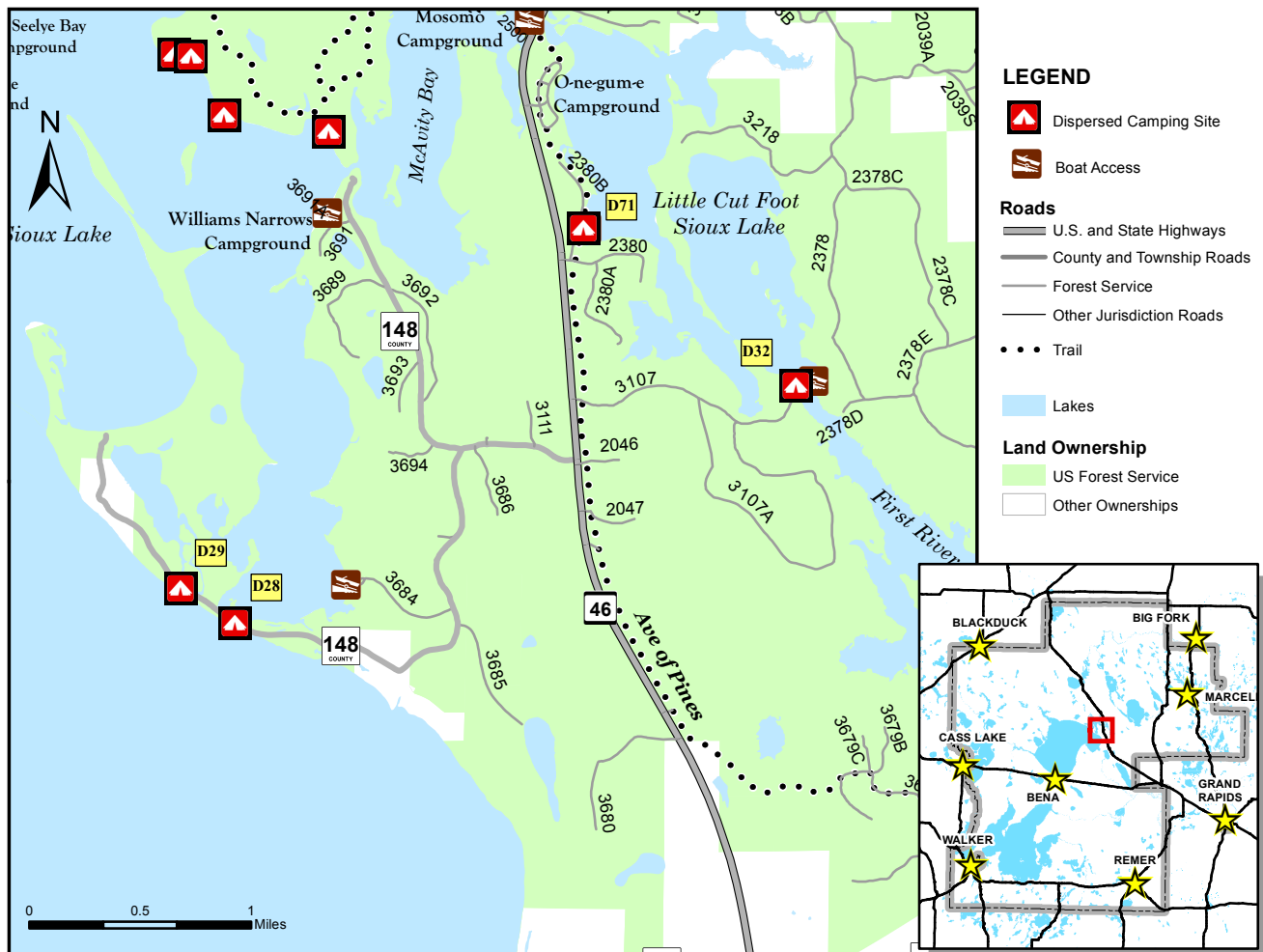
DISPERSED CAMPING

4/2018

MAP NO. 11

Dispersed Camping Site

	Longitude	Latitude	Toilet	Fire Pit	Number of Camping Sites	Activities
D28	94° 4' 20.654" W	47° 28' 36.619" N	None	None	1 Site	
D29	94° 4' 39.721" W	47° 28' 44.603" N	None	Rock	1 Site	
D32	94° 1' 2.423" W	47° 29' 34.255" N	Wilderness Pit	Rock	1 Site	
D71	94° 2' 21.592" W	47° 30' 10.700" N	None	None	1 Site	



Hunting Fishing Boating Picnicking

For information on Leave No Trace, go to www.LNT.org or call 1-800-332-4100



Forest Service

Deer River Ranger District
 1235 Division Street Deer River, MN 56636
 Voice: (218) 246-2123 Fax: (218) 246-9743
www.fs.usda.gov/Chippewa

The USDA Forest Service makes no warranty, expressed or implied regarding the data displayed on this map, and reserves the right to correct, update, modify, or replace this information without notification.

USDA is an equal opportunity provider, employer, and lender.

Deer River Area

11 D28 Battle Point South ★ 3

Wide open views of Cut Sioux Lake and across Winnibigoshish. Dirty, weedy water alongside campsite. Adjacent to dirt road, but not a busy one.

- 94° 4' 20.654" W 47° 28' 36.619" N
- No difficulty on approach; on the side of County Road 148.
- Small space for 1-2 tents.
- Parking space is limited.
- No toilet.
- Yes, rock fire ring.



11 D29 Battle Point North ★ 4

Wide open views of Cut Sioux Lake. Spacious. Mucky, weedy water along shore but great access for watercraft. Would be 5 star if water quality was higher. Significantly larger than nearby D28.

- 94° 4' 39.721" W 47° 30' 36.091" N
- No difficulty on approach; Forest Road 2240.
- Space for multiple tents, campers and vehicles.
- No toilet.
- Yes, rock fire ring.

11 D32 First River Lake ★ 4

Remote and private open area below the pines alongside First River and Lake. Watercraft accessible. Very scenic.

- 94° 5' 59.618" W 47° 47' 32.447" N
- Long but not too rugged approach; Forest Road 3107.
- Space for multiple tents or campers, parking, and trees for hammocks.
- Could be considered two sites.
- Pit toilet, rock fire rings, picnic table and makeshift dock.



11 D71 O-ne-gum-e ★ ?

Guidemaker could not locate this campsite, supposedly existing near the lake launch.

- 94° 2' 21.592" W 47° 30' 10.700" N



United States Department of Agriculture

Chippewa National Forest

RECREATION OPPORTUNITY GUIDE

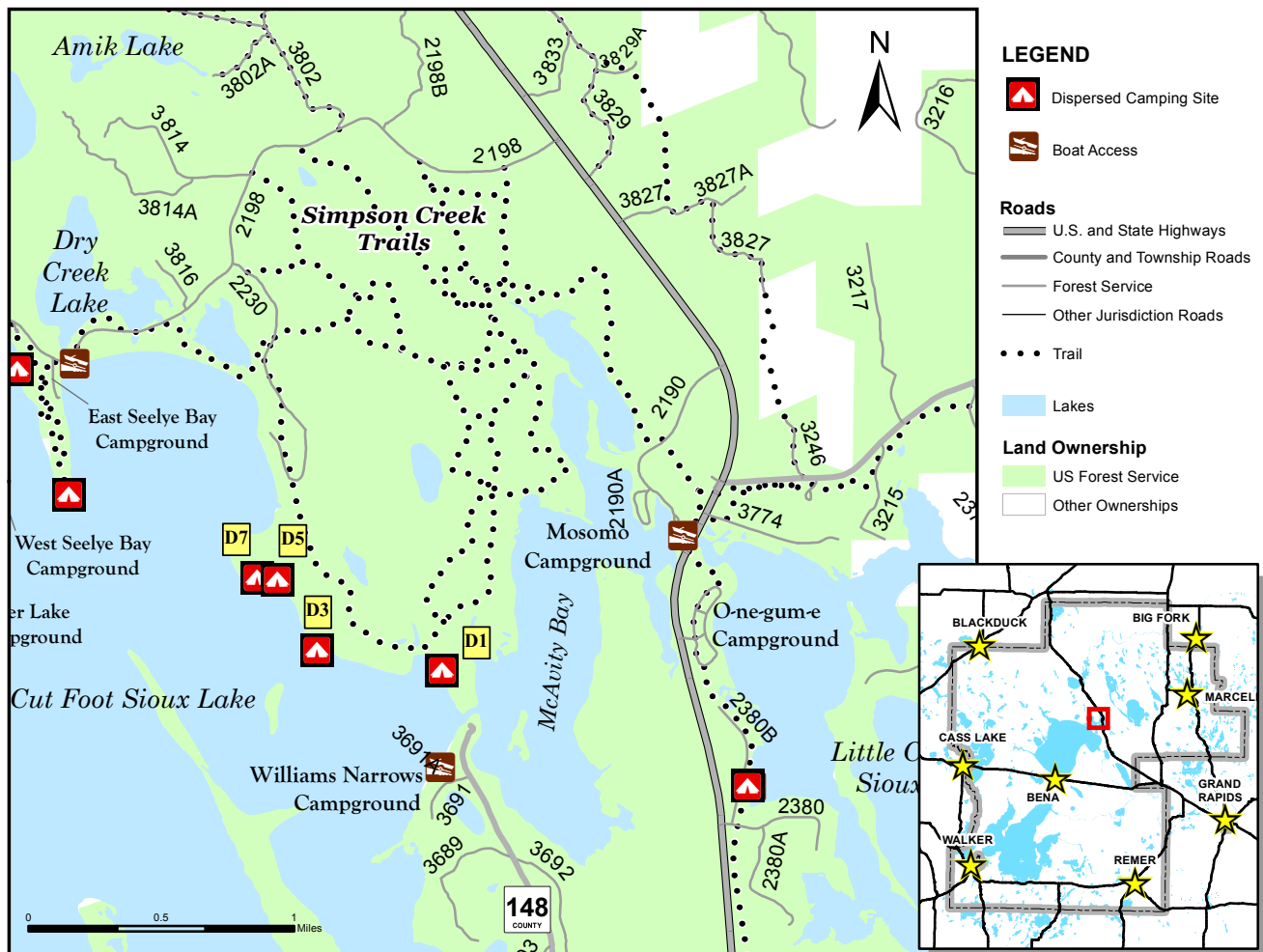
DISPERSED CAMPING

4/2018

MAP NO. 12

Dispersed Camping Site

	Longitude	Latitude	Toilet	Fire Pit	Number of Camping Sites	Activities
D1	94° 3' 50.446" W	47° 30' 32.447" N	Wilderness Pit	Metal Grate	1 Site	
D3	94° 4' 26.885" W	47° 30' 36.091" N	Wilderness Pit	Metal Grate	1 Site	
D5	94° 4' 38.585" W	47° 30' 49.797" N	Wilderness Pit	Metal Grate	1 Site	
D7	94° 4' 44.511" W	47° 30' 50.195" N	Wilderness Pit	Metal Grate	1 Site	



Hiking Hunting Fishing Boating Picnicking

For information on Leave No Trace, go to www.LNT.org or call 1-800-332-4100



Forest Service

Deer River Ranger District
 1235 Division Street Deer River, MN 56636
 Voice: (218) 246-2123 Fax: (218) 246-9743
www.fs.usda.gov/Chippewa

The USDA Forest Service makes no warranty, expressed or implied regarding the data displayed on this map, and reserves the right to correct, update, modify, or replace this information without notification.

USDA is an equal opportunity provider, employer, and lender.

Deer River Area

12 D1 Cut Foot Sioux Lake ★ 1



A somewhat open space remains in the woods, where this campsite is going feral. Vegetation has grown in too thick by either land or water access, but a metal fire grate remains.

- 94° 3' 50.446" W 47° 30' 32.447" N
- No access from water. Overgrown with cattails, no landing.
- No maintained access from Simpson Creek Trail system.
- Pit toilet and metal grate fire ring.



12 D3 Cut Foot Sioux Lake ★ 3



A broad lake view of long swimming beach, from a wide open space below the pines. Space for a couple of backpacking tents.

- 94° 4' 26.885" W 47° 30' 36.091" N
- Paddle in a half mile from Deer River public boat launch.
- No maintained access from Simpson Creek Trail system.
- Includes pit toilet and metal grate fire ring.



12 D5 Cut Foot Sioux Lake ★ 4



A quite large pine needle carpet for a collection of tents offers a slightly veiled view of the lake with a sandy beach access. Hammockable.

- 94° 4' 38.585" W 47° 30' 49.797" N
- Paddle in ~ 1 mile from Deer River public boat launch.
- No maintained access from Simpson Creek Trail system.
- Includes picnic table, pit toilet and metal grate fire ring.
- Can hike between here and nearby campsite D7.



12 D7 Cut Foot Sioux Lake ★ 3



A smaller space for 2-3 backpacking tents, sheltered among the trees with a little sandy beach in the cattails, good for wading & swimming.

- 94° 4' 44.511" W 47° 30' 50.195" N
- Paddle in ~ 1 mile from Deer River public boat launch.
- No maintained access from Simpson Creek Trail system.
- Includes picnic table, pit toilet and metal grate fire ring.
- Can hike between here and nearby campsite D5.





United States Department of Agriculture

Chippewa National Forest

RECREATION OPPORTUNITY GUIDE

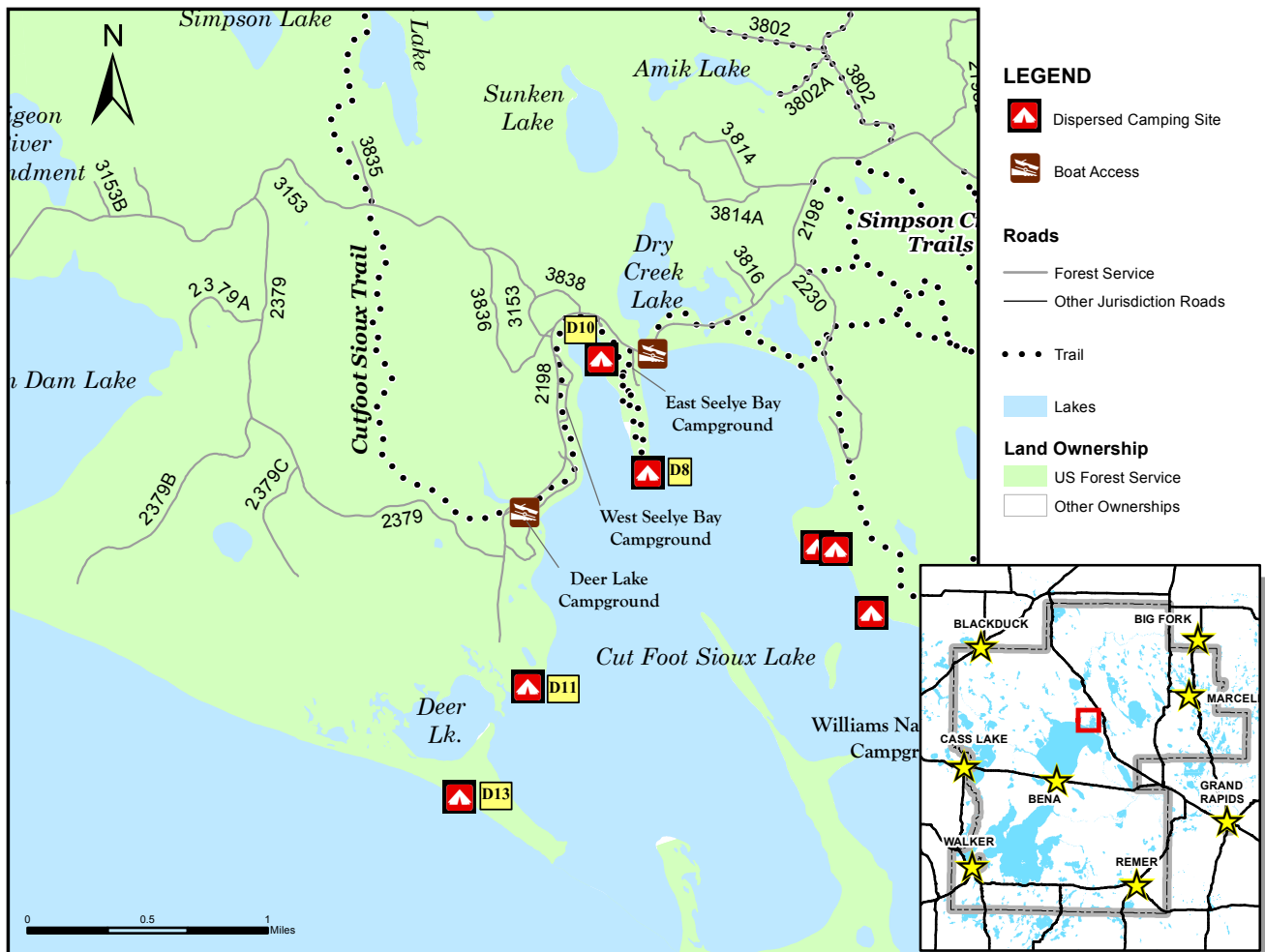
DISPERSED CAMPING

4/2018

MAP NO. 13

Dispersed Camping Site

	Longitude	Latitude	Toilet	Fire Pit	Number of Camping Sites	Activities
D8	94° 5' 39.264" W	47° 31' 5.921" N	None	Metal Grate	1 Site	
D10	94° 5' 54.683" W	47° 31' 30.360" N	None	Metal Grate	1 Site	
D11	94° 6' 16.832" W	47° 30' 18.996" N	None	None	1 Site	
D13	94° 6' 38.076" W	47° 29' 54.852" N	None	None	1 Site	



Hiking Hunting Fishing Boating Picnicking

For information on Leave No Trace, go to www.LNT.org or call 1-800-332-4100



Forest Service

Deer River Ranger District
 1235 Division Street Deer River, MN 56636
 Voice: (218) 246-2123 Fax: (218) 246-9743
www.fs.usda.gov/Chippewa

The USDA Forest Service makes no warranty, expressed or implied regarding the data displayed on this map, and reserves the right to correct, update, modify, or replace this information without notification.

USDA is an equal opportunity provider, employer, and lender.

Deer River Area

13 D8 Mosomo Point ★ 4



Grassy open space for several tents with mix of sun and shade on top a tall ridge jutting out into Cut Foot Sioux Lake. Eroded staircase descent to a wooded, rocky shoreline with swimming and paddle craft access.

- 94° 5' 39.264" W 47° 31' 5.921" N
- Hike in from car parking is **.70 miles**.
- Trailhead parking on Forest Road 2198.
- Paddle in from East Seelye Bay campground is one half mile.
- No toilet. Yes, metal grate fire ring.



13 D10 Sunken Lake ★ 4



Quite open coniferous shoreline on remote Sunken Lake. Very swimmable shoreline access. Five star if you like the hike in, four star if you like similarly quality sites without the walk.

- 94° 5' 54.683" W 47° 31' 5.921" N
- Hike in from car parking is **.75 miles**.
- Semi rugged approach on Forest Road 2091.
- Trailhead parking on Forest Road 2198.
- Space for several tents. Trees for hammocks.
- No toilet. Open ground fire ring.



13 D11 Cut Foot Sioux Lake ★ 0

Gone feral. All shoreline access is blocked by thick growth of cattails. Hike-in approach may exist by forest road hike, but this is unconfirmed.

- 94° 6' 16.832" W 47° 30' 18.996" N

13 D13 Deer Lake Point ★ 4



Bring rum. This very distinct beach area is some castaway style, hyper primitive dispersed camping. Expansive view. Sandy swimming, mixed with some gravel and mussel shells. Pitch on the sand or in a couple of spots behind the tree line.

- 94° 6' 38.076" W 47° 29' 54.852" N
- ~ 2.5 miles of paddling from Deer River or Pigeon River boat launches.
- No rock fire ring. Have a driftwood beach fire.

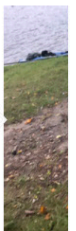
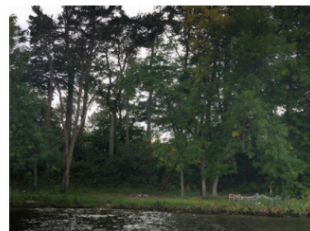


13 D16 Battle Point ★ 3



A small, flat, sheltered nook for a couple of tents on the northeast side of Battle Point. Shoreline bank with a tiny sandy landing, good swimming.

- 94° 5' 16.05" W 47° 30' 31.12" N
- Not included in 'Site Map Index'
- ~ 1.5 miles of paddling from East Seelye or Williams Narrows launches.
- Includes pit toilet, picnic table and rock fire ring.
- Rope swing nearby.





United States Department of Agriculture

Chippewa National Forest

RECREATION OPPORTUNITY GUIDE

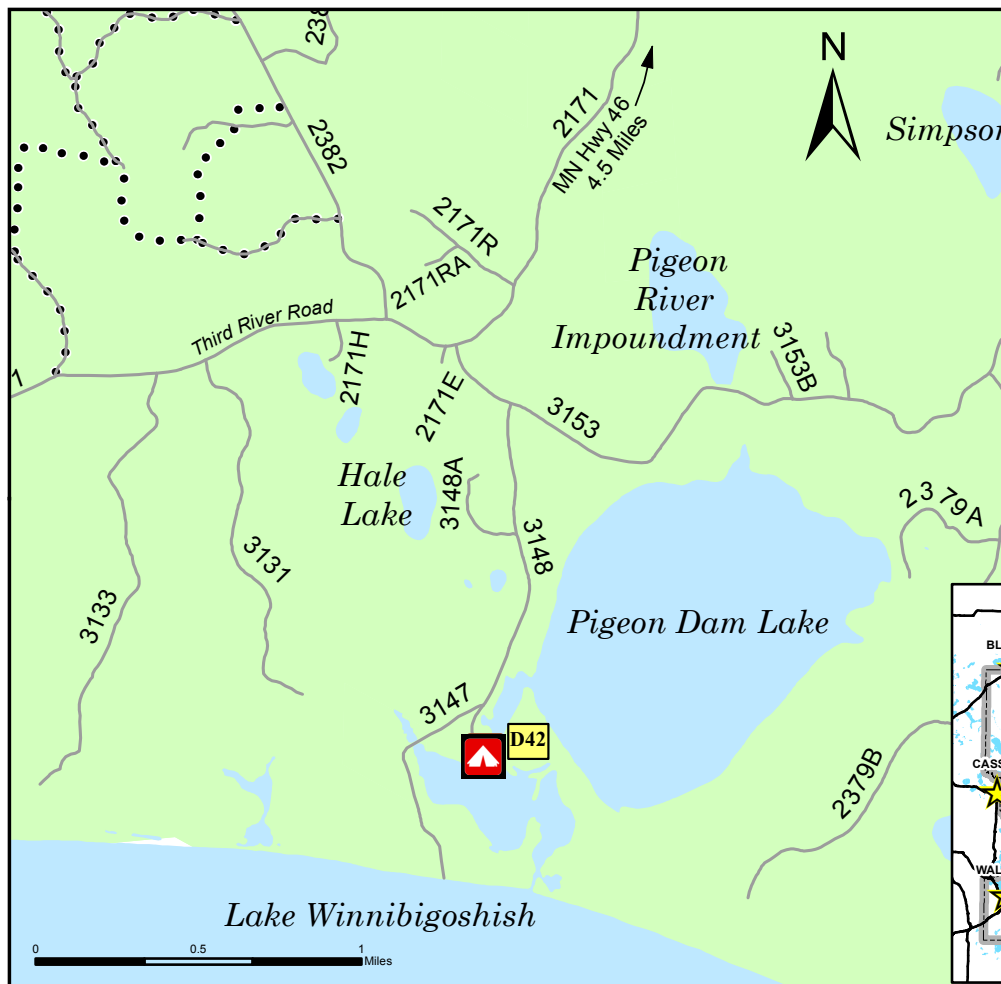
DISPERSED CAMPING

4/2018

MAP NO. 14

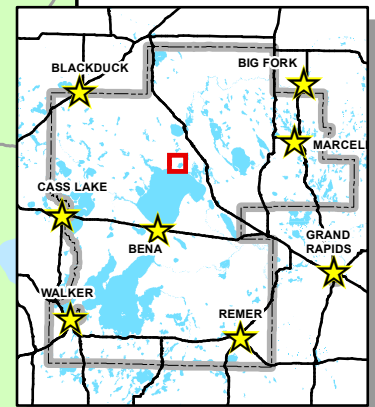
Dispersed Camping Site

	Longitude	Latitude	Toilet	Fire Pit	Number of Camping Sites	Activities
D42	94° 9' 44.693" W	47° 31' 2.097" N	None	Rock	1 Site	



LEGEND

- Dispersed Camping Site
- Roads**
 - Forest Service
 - Other Jurisdiction Roads
 - Trail
 - Lakes
- Land Ownership**
 - US Forest Service
 - Other Ownerships



- Hiking
- Hunting
- Fishing
- Boating
- Picnicking

For information on Leave No Trace, go to www.LNT.org or call 1-800-332-4100



Forest Service

Deer River Ranger District
 1235 Division Street Deer River, MN 56636
 Voice: (218) 246-2123 Fax: (218) 246-9743
www.fs.usda.gov/Chippewa

The USDA Forest Service makes no warranty, expressed or implied regarding the data displayed on this map, and reserves the right to correct, update, modify, or replace this information without notification.

USDA is an equal opportunity provider, employer, and lender.

Deer River Area

14 **D42** Pigeon Dam Lake ★ 3

One small grassy campsite and one very large open area adjacent a not busy public boat landing. If one is occupied, the other is not very private. Limited view of calm, marshy lake - not high quality swimming.

- 94° 9' 44.693" W 47° 31' 2.097" N
- Easy to take wrong turn, but enjoyable approach; Forest Road 3148.
- Space for multiple tents or campers, parking.
- Could be considered two sites.
- Rock fire ring, picnic table and access to calm backwater.





United States Department of Agriculture

Chippewa National Forest

RECREATION OPPORTUNITY GUIDE

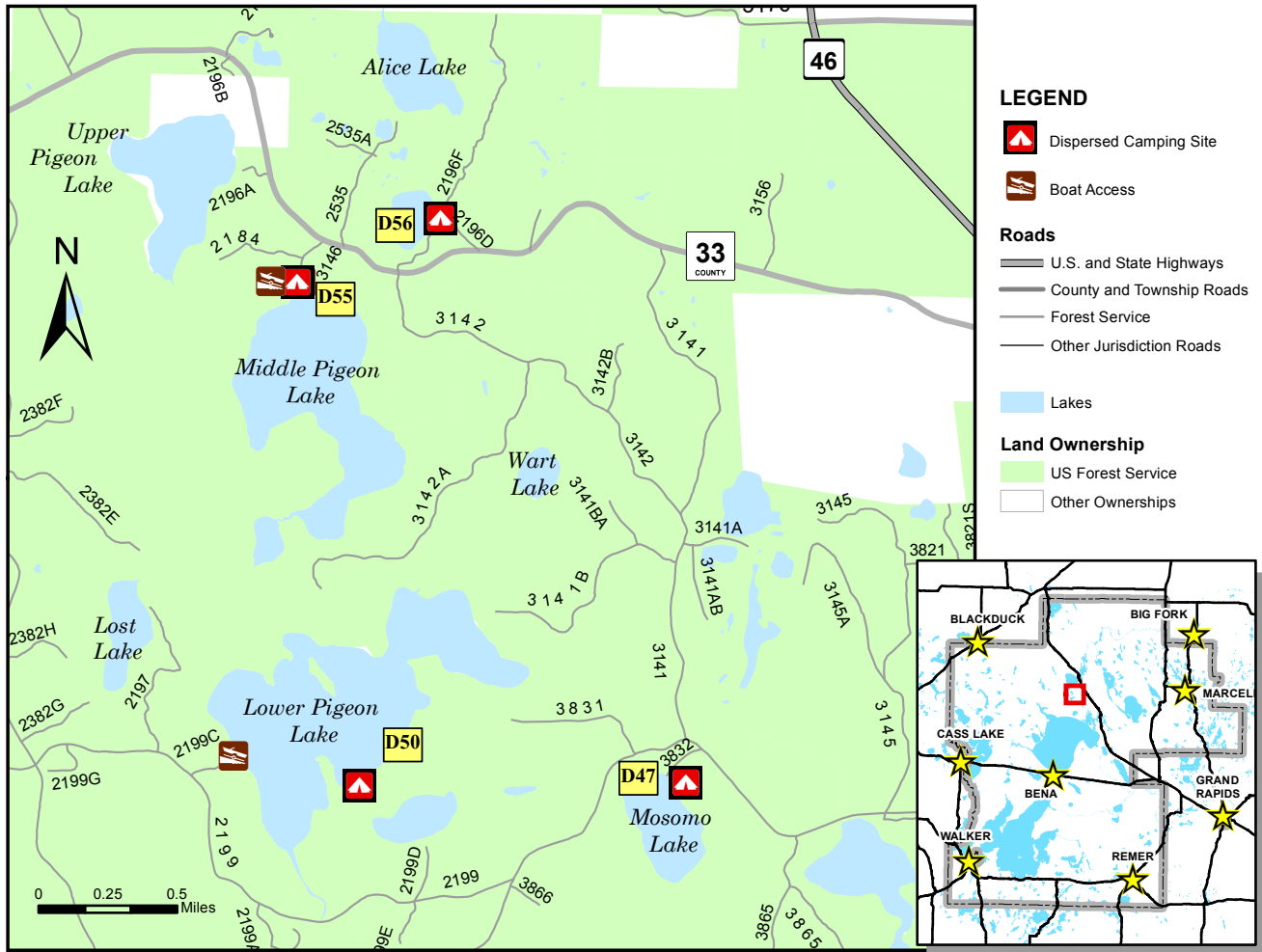
DISPERSED CAMPING

4/2018

MAP NO. 15

Dispersed Camping Site

	Longitude	Latitude	Toilet	Fire Pit	Number of Camping Sites	Activities
D47	94° 8' 6.763" W	47° 33' 38.225" N	Wilderness Pit	Metal Grate	1 Site	
D50	94° 9' 37.217" W	47° 33' 36.882" N	None	None	1 Site	
D55	94° 9' 56.587" W	47° 35' 11.111" N	Wilderness Pit	Metal Grate	2 Sites	
D56	94° 9' 17.058" W	47° 35' 23.513" N	None	Rock	1 Site	



Hunting Fishing Boating Picnicking

For information on Leave No Trace, go to www.LNT.org or call 1-800-332-4100



Forest Service

Blackduck Ranger District
 417 Forestry Drive Blackduck, MN 56630
 Voice: (218) 835-4291 Fax: (218) 835-3132
www.fs.usda.gov/Chippewa

The USDA Forest Service makes no warranty, expressed or implied regarding the data displayed on this map, and reserves the right to correct, update, modify, or replace this information without notification.

USDA is an equal opportunity provider, employer, and lender.

Deer River Area

15 D47 Mosomo Lake ★ 2



This campsite belongs to the plants now. It would go to a 2 star if someone took it back from them. All overgrown, including very limited shoreline access.

- 94° 8' 6.763" W 47° 33' 38.225" N
- Difficult to recognize the rough approach; Forest Road 3832.
- Limited space for shelters, some space for parking.
- Yes, rock ring in the vegetation. Toilet probably is somewhere too.



15 D50 Lower Pigeon Lake ★ 0



Author found no campsite existing at this GPS location.

- 94° 9' 37.217" W 47° 33' 36.882" N
- All overgrown and forest blowdown. No clear access from lake.



15 D55 Middle Pigeon Lake ★ 5



Very open and easily accessible camping area alongside a public boat launch the sizeable lake. Consider this two campsites, with open views of each other. Seems popular.

- 94° 9' 56.587" W 47° 35' 11.111" N
- No difficulty on approach; Forest Road 2958.
- Space for many tents, campers, boat trailers and trees for hammocks.
- Plenty of parking space.
- Pit toilet, metal grate fire ring and an actual dock.

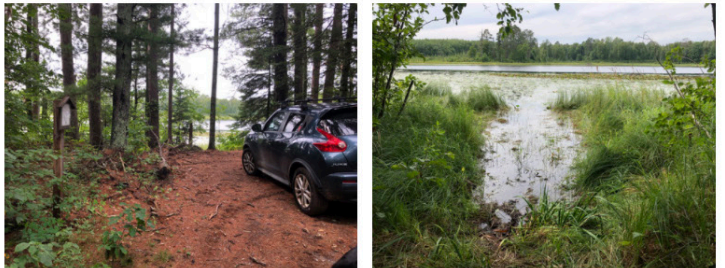


15 D56 One Loaf Lake ★ 1



Very small and claustrophobic. Highly vegetated shoreline with a narrow boat landing or a very large beaver run. This may be a feeding area for very large beavers. Small lake though.

- 94° 9' 17.058" W 47° 35' 23.513" N
- Some difficulty navigating on approach; Forest Road 2196F or 2196D.
- Little space, for tents or anything else.
- No amenities.





United States Department of Agriculture

Chippewa National Forest

RECREATION OPPORTUNITY GUIDE

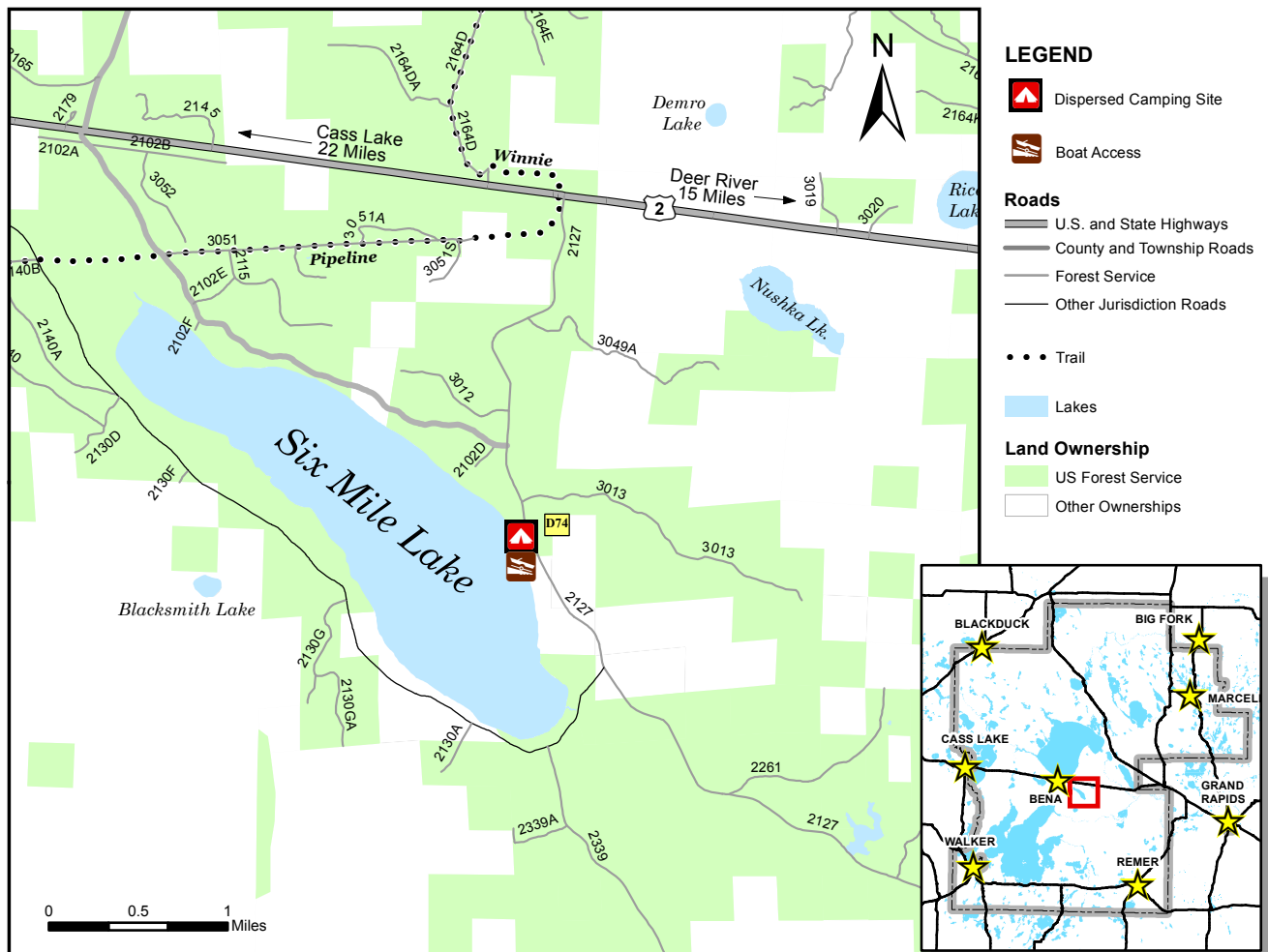
DISPERSED CAMPING

4/2018

MAP NO. 24

Dispersed Camping Site

	Longitude	Latitude	Toilet	Fire Pit	Number of Camping Sites	Activities
D74	94° 7' 28.231" W	47° 18' 37.129" N	Pit	Metal Crate	6 Sites	



Hunting Fishing Boating Picnicking

For information on Leave No Trace, go to www.LNT.org or call 1-800-332-4100



Forest Service

Deer River Ranger District
 1235 Division Street Deer River, MN 56636
 Voice: (218) 246-2123 Fax: (218) 246-9743
www.fs.usda.gov/Chippewa

The USDA Forest Service makes no warranty, expressed or implied regarding the data displayed on this map, and reserves the right to correct, update, modify, or replace this information without notification.

USDA is an equal opportunity provider, employer, and lender.

Deer River Area

24 **D74** Six Mile Lake ★ 3



A small car campground, with six campsites. Open spaces surrounded by young woodland groves. Public boat launch nearby, and accessible from paddling elsewhere on the lake. Not very scenic, sort of milquetoast.

- 94° 7' 28.231" W 47° 18' 37.129" N
- Accessible approach from Forest Road 2127.
- Space for multiple tents or campers, parking. Many campsite spaces.
- Outhouse toilet.
- Metal fire grates in many sites, rock fire rings in others.





United States Department of Agriculture

Chippewa National Forest

RECREATION OPPORTUNITY GUIDE

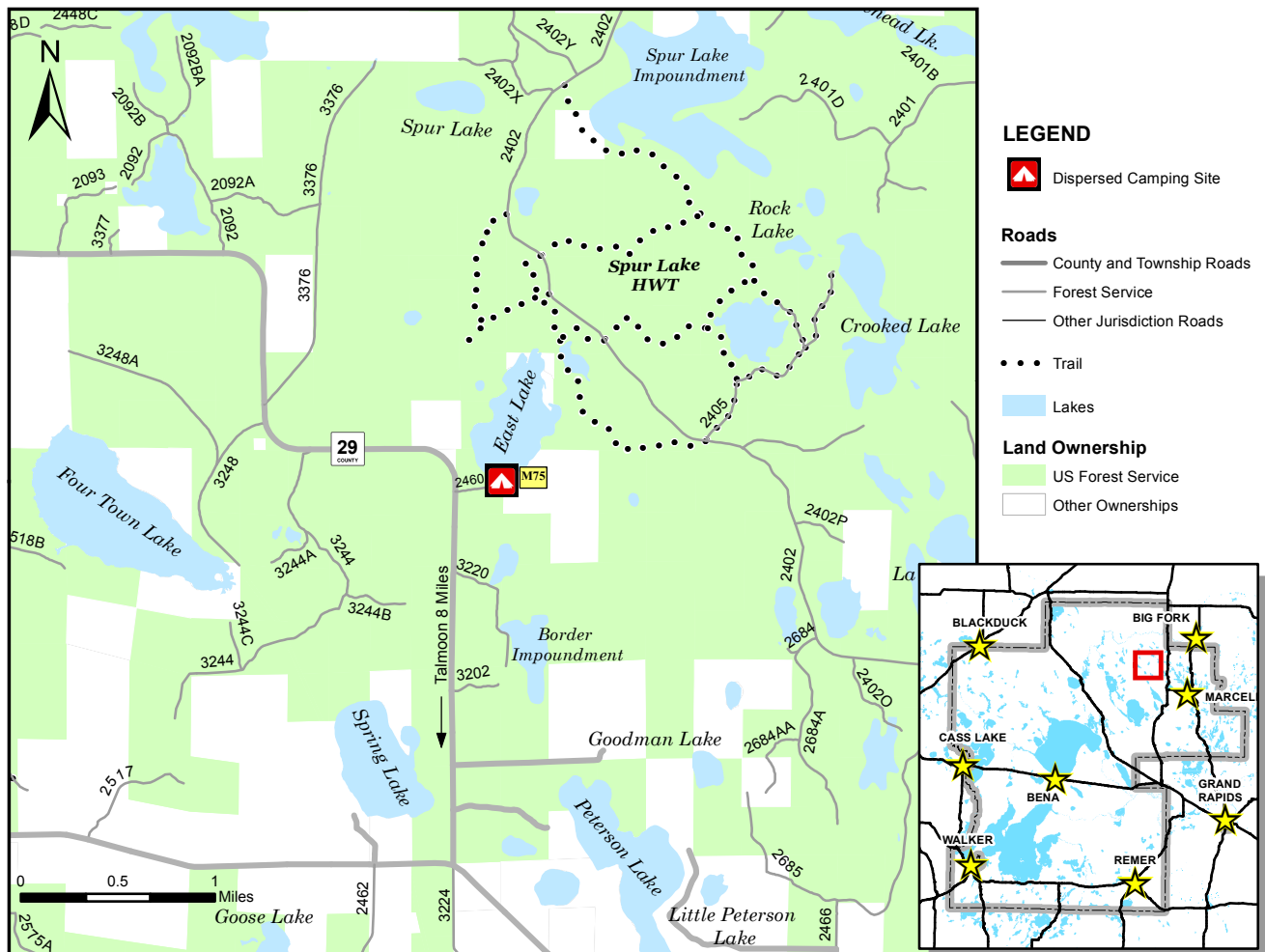
DISPERSED CAMPING

4/2018

MAP NO. 2

Dispersed Camping Site

	Longitude	Latitude	Toilet	Fire Pit	Number of Camping Sites	Activities
M75	93° 51' 16.684" W	47° 40' 16.651" N	None	None	1 Site	



Hunting Fishing Boating Picnicking

For information on Leave No Trace, go to www.LNT.org or call 1-800-332-4100



Forest Service

Deer River Ranger District
 1235 Division Street Deer River, MN 56636
 Voice: (218) 246-2123 Fax: (218) 246-9743
www.fs.usda.gov/Chippewa

The USDA Forest Service makes no warranty, expressed or implied regarding the data displayed on this map, and reserves the right to correct, update, modify, or replace this information without notification.

USDA is an equal opportunity provider, employer, and lender.

Marcell Area

2 M75 East Lake ★ 2



Grassy open space on the shore of a vegetated "lake" impoundment. Feels remote, but is located on a dirt road. Not very swimmable.

- 93° 51' 16.684" W 47° 40' 16.651" N
Nice approach on Forest Road 2460.
- Space for a backpacking size tents or two. Limited parking.
- No amenities.





United States Department of Agriculture

Chippewa National Forest

RECREATION OPPORTUNITY GUIDE

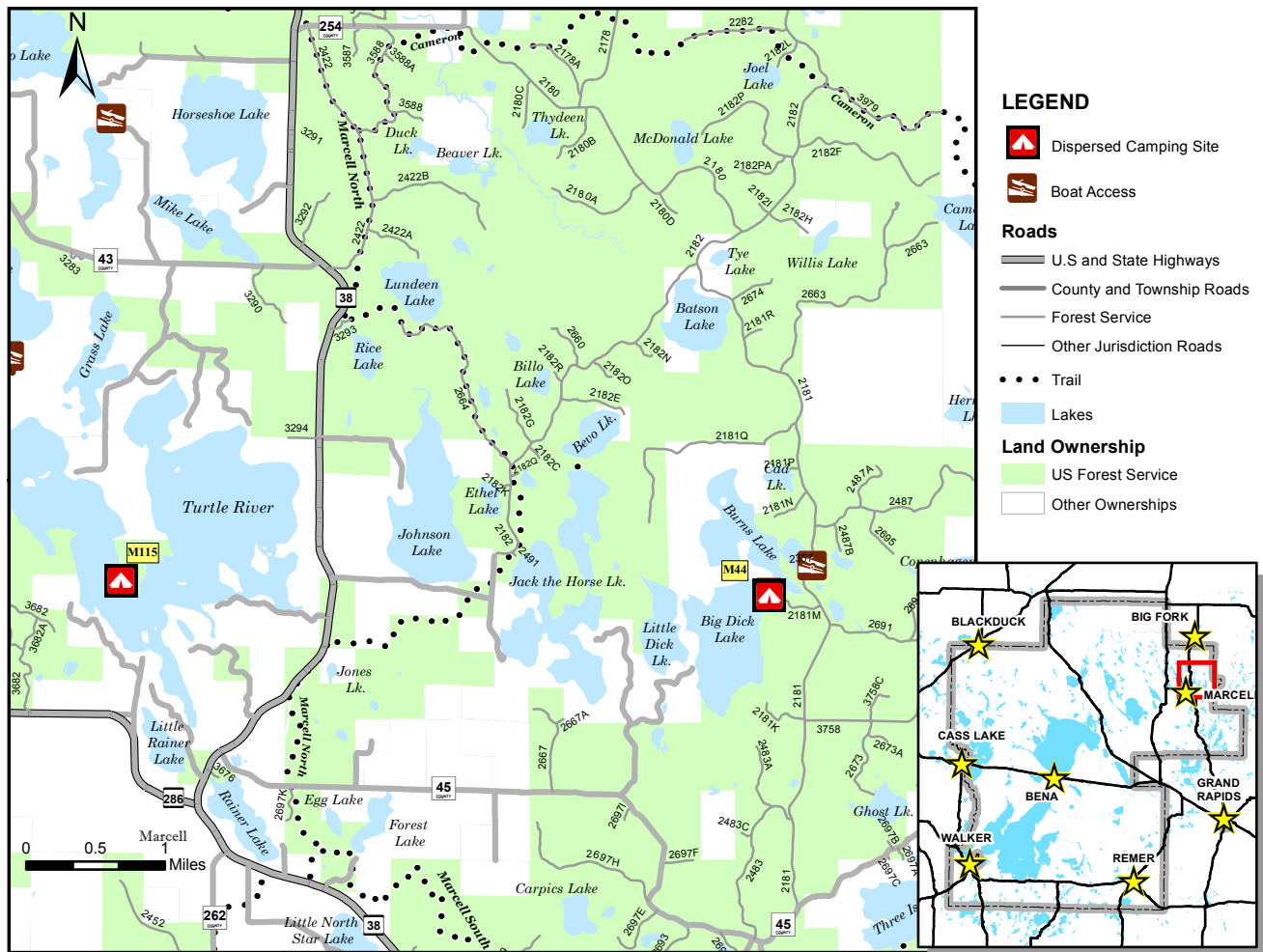
DISPERSED CAMPING

4/2018

MAP NO. 3

Dispersed Camping Site

	Longitude	Latitude	Toilet	Fire Pit	Number of Camping Sites	Activities
M115	93° 42' 11.327" W	47° 36' 58.599" N	None	Rock	1 Site	
M44	93° 36' 10.858" W	47° 36' 55.080" N	None	Rock	1 Site	



Picnicking Fishing Boating Hunting

For information on Leave No Trace, go to www.LNT.org or call 1-800-332-4100



Forest Service

Deer River Ranger District
 1235 Division Street Deer River, MN 56636
 Voice: (218) 246-2123 Fax: (218) 246-9743
www.fs.usda.gov/Chippewa

The USDA Forest Service makes no warranty, expressed or implied regarding the data displayed on this map, and reserves the right to correct, update, modify, or replace this information without notification.

USDA is an equal opportunity provider, employer, and lender.

Marcell Area

3 M115 Turtle Lake ★ 4



A scenic and small wooded space on Government Point. Small, sandy beach between mature cedar trees gives access to clean and clear water.

- 93° 42' 11.327" W 47° 36' 58.599" N
- Paddle in ~ 2 miles from Maple/Turtle public boat launch up north.
- Yes, wilderness toilet, metal fire pit and extra metal grill pit.
- Mediocre rope swing present.



3 M44 Big Dick Lake ★ 5



She's a real beauty. No need to overcompensate with the name. Gorgeous, spacious, shaded by mature pines. Great sandy bottomed shoreline and swimming area.

- 93° 36' 10.858" W 47° 36' 55.080" N
- Easy approach on Forest Road 2460, lots of parking.
- Very spacious, multiple hammock sites.
- No toilet. Yes, rock fire ring with metal grate and a picnic table.





United States Department of Agriculture

Chippewa National Forest

RECREATION OPPORTUNITY GUIDE

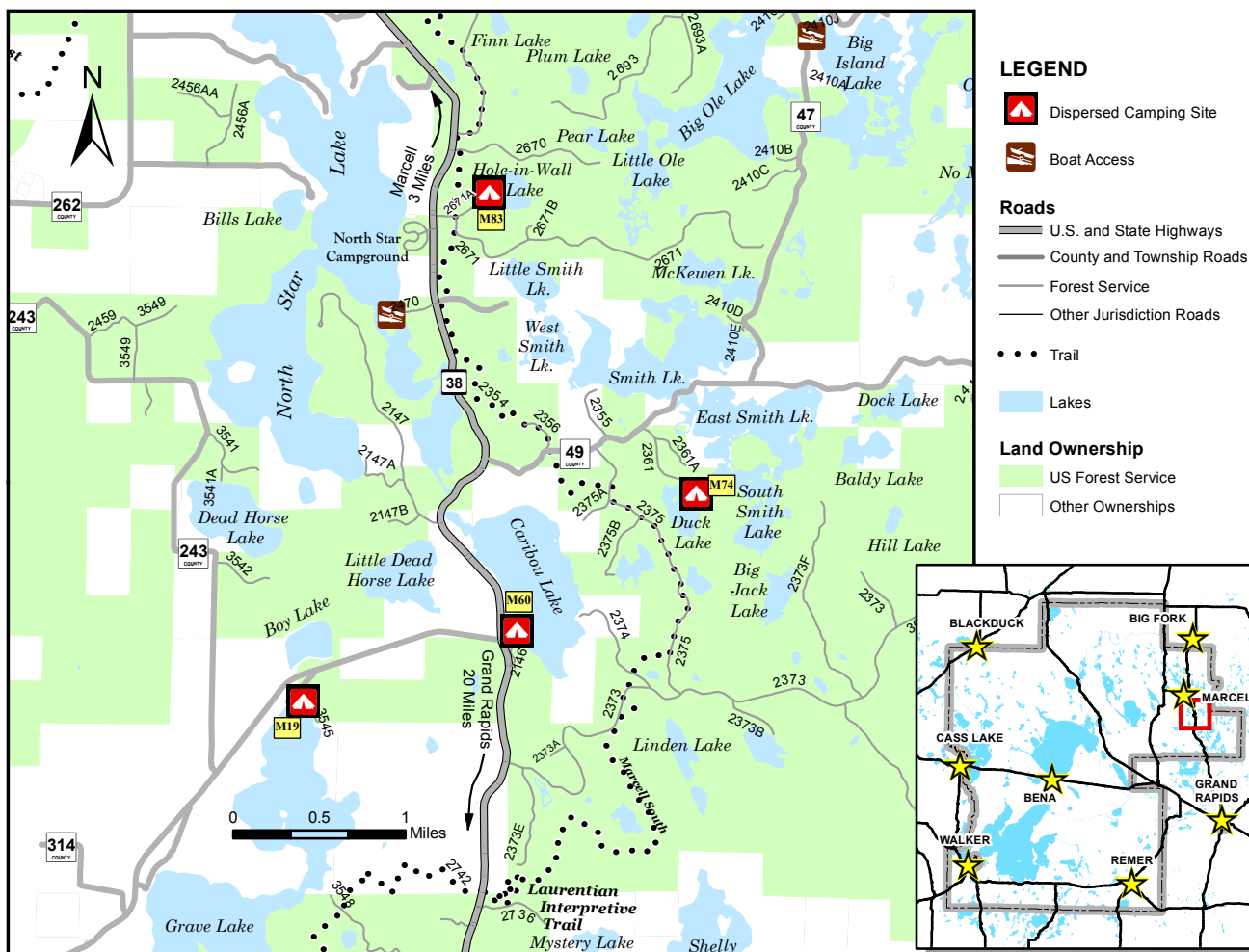
DISPERSED CAMPING

4/2018

MAP NO. 4

Dispersed Camping Site

	Longitude	Latitude	Toilet	Fire Pit	Number of Camping Sites	Activities
M19	93° 39' 58.097" W	47° 31' 3.109" N	Wilderness Pit	Metal Grate	1 Site	
M60	93° 38' 22.832" W	47° 31' 25.108" N	Pit	Metal Grate	3 Site	
M74	93° 37' 3.177" W	47° 32' 7.043" N	None	None	1 Site	
M83	93° 38' 36.656" W	47° 33' 37.715" N	None	None	1 Site	



Hunting Fishing Boating Picnicking

For information on Leave No Trace, go to www.LNT.org or call 1-800-332-4100



Forest Service

Deer River Ranger District
 1235 Division Street Deer River, MN 56636
 Voice: (218) 246-2123 Fax: (218) 246-9743
www.fs.usda.gov/Chippewa

The USDA Forest Service makes no warranty, expressed or implied regarding the data displayed on this map, and reserves the right to correct, update, modify, or replace this information without notification.

USDA is an equal opportunity provider, employer, and lender.

Marcell Area

4 M19 Grave Lake ★ 4



Spacious lakeside. Seems popular. Open and grassy, mix of sun and shade. Has a swimming beach.

- 93° 39' 58.097" W 47° 31' 3.109" N
- Accessible turn off approach from Forest Road 3545.
- Plenty of space for many tents or a couple of campers.
- Includes toilet and metal fire ring.



4 M60 Caribou Lake ★ 4



Three primitive campsites at developed public boat launch. Popularly occupied. Spacious sites, with scenic overlooks but not super private.

- 93° 38' 22.832" W 47° 31' 25.108" N
- Accessible turn off approach from Highway 38.
- Plenty of space for many tents or a couple of campers.
- Includes toilet and metal fire ring.



4 M74 Duck Lake ★ 3



Difficult to access even with SUV to reach a reasonably scenic space with lake access that's reasonably swimmable. Moderately sized lake.

- 93° 37' 3.177" W 47° 32' 7.043" N
- Remote, difficult approach from Forest Road 2361. Almost impassable.
- Space for multiple tents or campers, parking. Many campsite spaces.
- No amenities.



4 M83 Hole in the Wall Lake ★ 1



Difficult to drive-in, required a hike-in approach. Small and vegetated space with overgrown shoreline. More of a paddling put-in than a campsite.

- 93° 38' 36.656" W 47° 33' 37.715" N
- Very difficult approach from Forest Road 2671A. Consider classed for true off highway vehicles.
- Hiking in would take .30 miles.
- No amenities.





United States Department of Agriculture

Chippewa National Forest

RECREATION OPPORTUNITY GUIDE

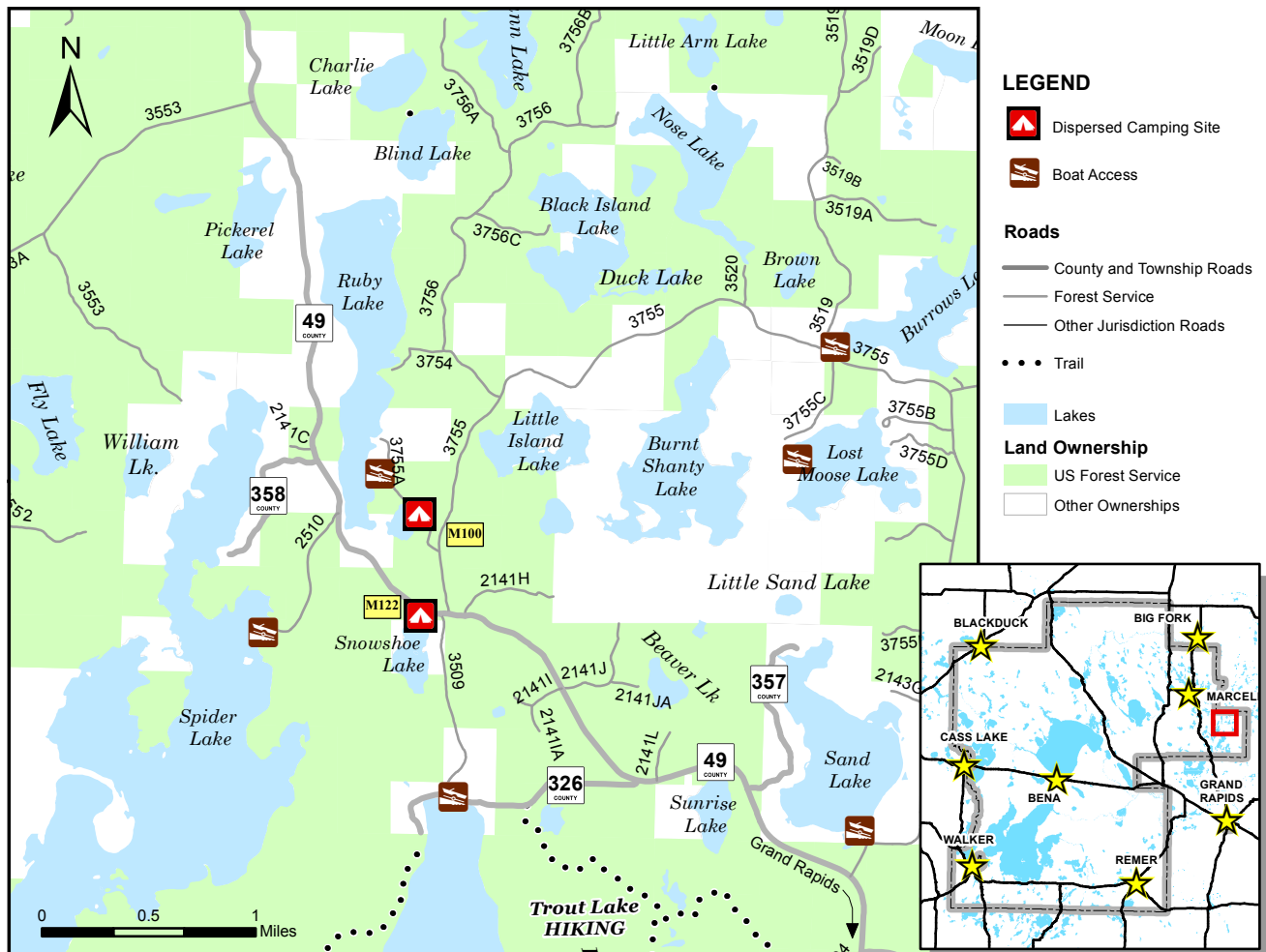
DISPERSED CAMPING

4/2018

MAP NO. 5

Dispersed Camping Site

	Longitude	Latitude	Toilet	Fire Pit	Number of Camping Sites	Activities
M100	93° 32' 51.084" W	47° 30' 29.688" N	None	Rock	1 Site	
M122	93° 32' 50.419" W	47° 30' 4.959" N	None	None	1 Site	



Hunting Fishing Boating Picnicking

For information on Leave No Trace, go to www.LNT.org or call 1-800-332-4100



Forest Service

Deer River Ranger District
 1235 Division Street Deer River, MN 56636
 Voice: (218) 246-2123 Fax: (218) 246-9743
www.fs.usda.gov/Chippewa

The USDA Forest Service makes no warranty, expressed or implied regarding the data displayed on this map, and reserves the right to correct, update, modify, or replace this information without notification.

USDA is an equal opportunity provider, employer, and lender.

Marcell Area

5 M100 Ruby Lake ★ 2



Small pull out with poor view of lake and pretty terrible shoreline access to water.

- 93° 32' 51.084" W 47° 30' 29.688" N
- Pull out right off the adjacent fire road. Exposed and not private. Limited space for 2-3 backpacking tents. Yes, rock fire ring. Some trees down the shore for hammocks with better view of lake.



5 M122 Snowshoe Lake ★ ?



Guidemaker cannot locate this campsite.

- 93° 32' 50.419" W 47° 30' 4.959" N
- The closest possible candidate for this site feels more like an overgrown watercraft put-in rather than a campsite.
- Parking here overnight directly on the Forest Road should be avoided.



United States Department of Agriculture

Chippewa National Forest

RECREATION OPPORTUNITY GUIDE

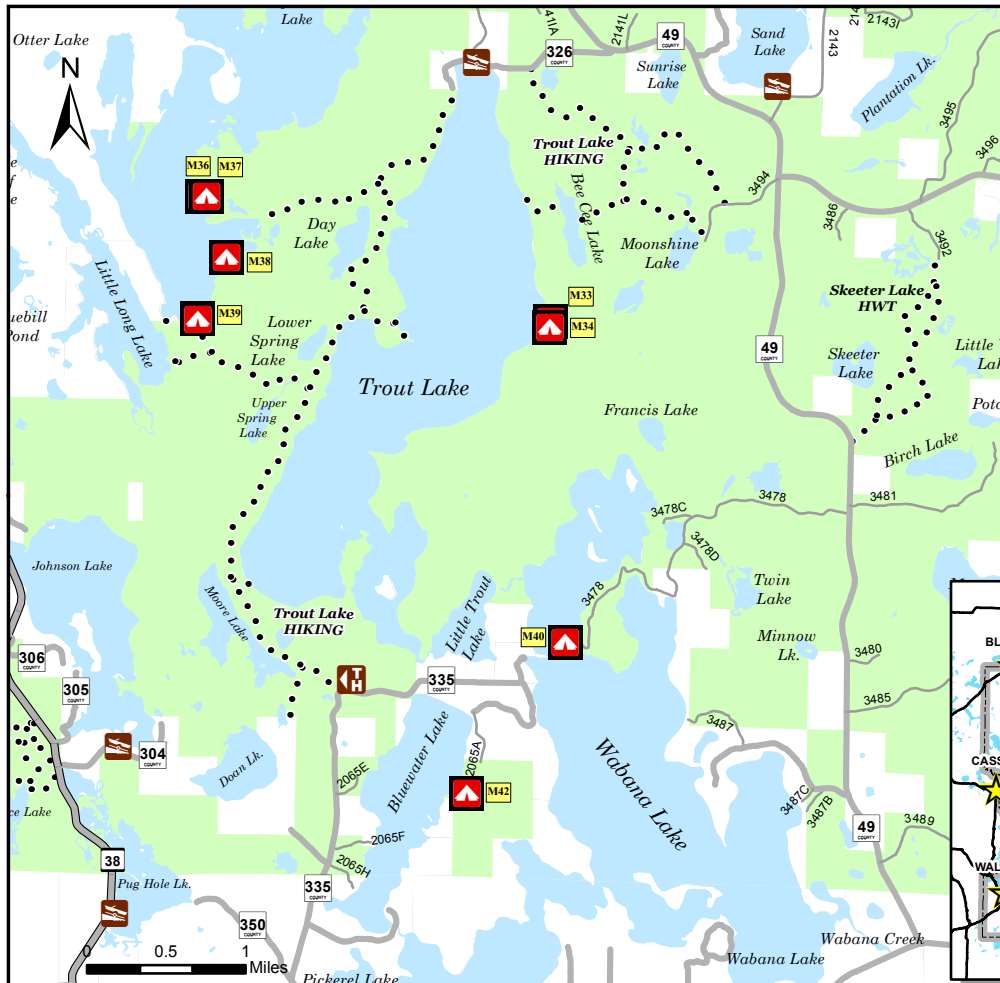
DISPERSED CAMPING

4/2018

MAP NO. 6

Dispersed Camping Site

	Longitude	Latitude	Toilet	Fire Pit	Number of Camping Sites	Activities
M33 M34	93° 32' 1.266" W	47° 27' 55.717" N	Wilderness Pit	Metal Grate	2 Sites	
M36 M37	93° 34' 50.915" W	47° 28' 35.950" N	Wilderness Pit	Metal Grate	2 Sites	
M38	93° 34' 38.703" W	47° 28' 15.944" N	Wilderness Pit	Metal Grate	1 Site	
M39	93° 34' 52.470" W	47° 27' 55.548" N	Wilderness Pit	Metal Grate	1 Site	
M40	93° 31' 53.153" W	47° 26' 9.975" N	Wilderness Pit	Metal Grate	1 Site	
M42	93° 32' 40.349" W	47° 25' 20.078" N	Wilderness Pit	Metal Grate	1 Site	



LEGEND

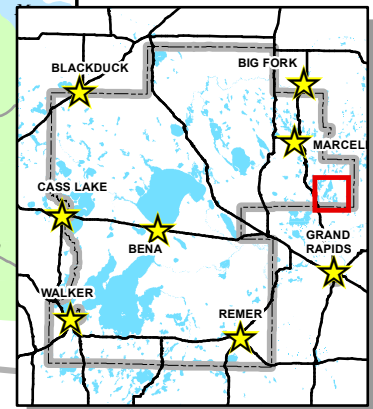
- Dispersed Camping Site
- Trailhead
- Boat Access

Roads

- U.S. and State Highways
- County and Township Roads
- Forest Service
- Other Jurisdiction Roads
- Trail

Land Ownership

- US Forest Service
- Other Ownerships



- Hiking
- Fishing
- Boating
- Hunting
- Picnicking

For information on Leave No Trace, go to www.LNT.org or call 1-800-332-4100



Deer River Ranger District
 1235 Division Street Deer River, MN 56636
 Voice: (218) 246-2123 Fax: (218) 246-9743
www.fs.usda.gov/Chippewa

The USDA Forest Service makes no warranty, expressed or implied regarding the data displayed on this map, and reserves the right to correct, update, modify, or replace this information without notification.

USDA is an equal opportunity provider, employer, and lender.

Marcell Area

6 M33 Trout Lake ★4



Very scenic view of the spectacular colored Trout Lake. Wide, sandy landing beach between the swimmable water and a mostly gently sloped campsite. Not the flattest terrain, but open space for several camp tents. Lots of trees for hammocks.

- 93° 32' 1.266" W 47° 27' 55.717" N
- Nearest paddle is 1.5 mile approach from put-in at Trout Lake trailhead.
- Yes, metal fire grate, pit toilet and picnic table.
- Hike short distance to neighboring campsite M34.

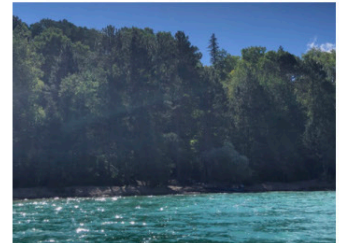


6 M34 Trout Lake ★4

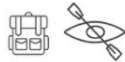


Very scenic view of the spectacular colored Trout Lake. Wide, sandy landing beach between the swimmable water and a mostly gently sloped campsite. Not the flattest terrain, but open space for several camp tents. Lots of trees for hammocks.

- 93° 32' 1.266" W 47° 27' 55.717" N
- Nearest paddle is 1.5 mile approach from put-in at Trout Lake trailhead.
- Yes, metal fire grate, pit toilet and picnic table.
- Hike short distance to neighboring campsite M33.

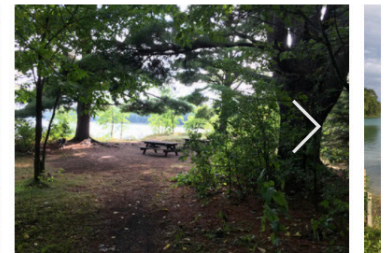


6 MX1 Trout Lake ★5



One of the best sites in the Forest. A large sandy beach on the calm bay behind the historic Joyce Estate peninsula. Centuries old white pines shade a spacious, grassy lakeside hill. Very scenic. Not in 'Site Index Map'.

- 93°33'31.90"W 47°27'56.65"N
- Hike in from Trout Lake trailhead car parking is **1.8 miles**.
- Paddle in from same trailhead put-in is **2 miles**.
- Approach on public County Road 326 through a private resort.
- Metal fire grate, picnic table and outhouse like pit toilet.



6 MX2 Trout Lake ★3



A small additional or overflow site adjacent to MX1, a short walk along the shoreline. Access to water without any beach. Cramped, sheltered confines amongst the brush. Not in 'Site Index Map'.

- 93°33'34.34"W 47°27'56.65"N
- Hike in from car parking is **1.8 miles**.
- Metal fire grate and picnic table.



Marcell Area

6 M36 Spider Lake ★ 5



Scenic views of lake from a mostly grassy space below a tall pine grove. Small sandy boat landing with good swimming. Short hike to adjacent M37.

- 93° 34' 50.915" W 47° 28' 35.950" N
- Paddle approach from north end launch put-in a distance of **2 miles**.
- Paddle approach from Little Long Lake launch with portage is **1.5 miles**.
- Space for several camping tents and trees for hammocks.
- Includes metal fire grate and a picnic table.



6 M37 Spider Lake ★ 3



Consider overflow from adjacent site M36. Views disrupted by brush. Picnic table in state of disrepair. Vegetated boat landing, poor swimming point.

- 93° 34' 50.915" W 47° 28' 35.950" N
- Paddle approach from north end launch put-in a distance of **2 miles**.
- Paddle approach from Little Long Lake launch with portage is **1.5 miles**.
- Space for a couple of backpacking tents.
- Includes metal fire grate and a picnic table.



6 M38 Spider Lake ★ 4



Spacious, mostly dirt opening beneath tall, healthy pine grove with scenic views from this long point into the lake. Wind protected cove with sloped landing and sandy swimming shelf.

- 93° 34' 38.703" W 47° 28' 15.944" N
- Paddle approach from north end launch put-in a distance of **2.2 miles**.
- Paddle approach from Little Long Lake launch with portage is **1.3 miles**.
- Space for many tents, and trees for hammocks.
- Includes a metal fire grate and picnic table.



6 M39 Spider Lake ★ 4



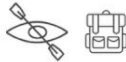
Lots of open room and woody nooks below some fat, old pines in the forested back corner of a southern bay. Broad and sandy boat landing and swimming beach. A bit overgrown of a trail right behind campsite, but opens up to a reasonably enjoyable backpacking approach on Trout Lake trail system.

- 93° 34' 52.470" W 47° 27' 55.548" N
- Paddle approach from north end launch put-in a distance of **2.5 miles**.
- Paddle approach from Little Long Lake launch with portage is **1 mile**.
- Hike in from Trout Lake trailheads car parking is **2.5 miles**.
- Includes metal fire grate and picnic table.



Marcell Area

6 M94 Spider Lake ★ 2



Discontinued campsite, but remains accessible. Small, overgrown with some tree downfall. A wilderness trail backpacking approach from behind on Trout Lake trail system.

- 93°35'6.49"W 47°27'45.55"N
- Paddle approach from Little Long Lake launch with portage is **.5 mile**.
- Hike in from Trout Lake trailheads car parking is **2.5 miles**.
- Includes metal fire grate and pit toilet.



6 M40 Wabana Lake ★ 5



A wooded point of large cedars, offering shade and privacy with great views. A nice boat landing with wide, sandy swimming shallows.

- 93° 31' 53.153" W 47° 26' 9.975" N
- Paddle in ~ .3 miles from public boat launch on western shore.
- Includes picnic table, metal bear box, rock fire ring and pit toilet.
- No trail connection to nearby M41.



6 M41 Wabana Lake ★ 4



An open space along the lake with small sandy beach and fire, lounge area. A long grassy clearing for tents stretches back into the woods and another tent site is up a hill rise beside that.

- 93° 31' 41.61" W 47° 26' 6.41" N
- Paddle in ~ .3 miles from public boat launch on western shore.
- Includes picnic table, metal bear box, rock fire ring and pit toilet.
- No trail connection to nearby M40.



6 MX3 Wabana Lake ★ 4



Scenic, open views from atop a woodsy hilltop point jutting into Wakerman Bay. Not much of a boat landing, with a staircase haul up to camp.

- 93° 32' 44.34" W 47° 24' 20.88" N
- Paddle in ~ 3 miles from public boat launch on northern Wabana or Birch Bay.
- Includes picnic table, rock fire ring and pit toilet.



6 M42 Bluewater Lake ★ 4



A wooded and roomy site, quite some distance away from public access, while not feeling remote. On beautiful colored water.

- 93° 32' 40.349" W 47° 25' 20.078" N
- A nearly 4 mile paddle from public launches on nearby Wabana Lake. Enter Bluewater via a small, stream channel on southern end of lake.
- Includes fire ring, picnic table, bench and bear box.





United States Department of Agriculture

Chippewa National Forest

RECREATION OPPORTUNITY GUIDE

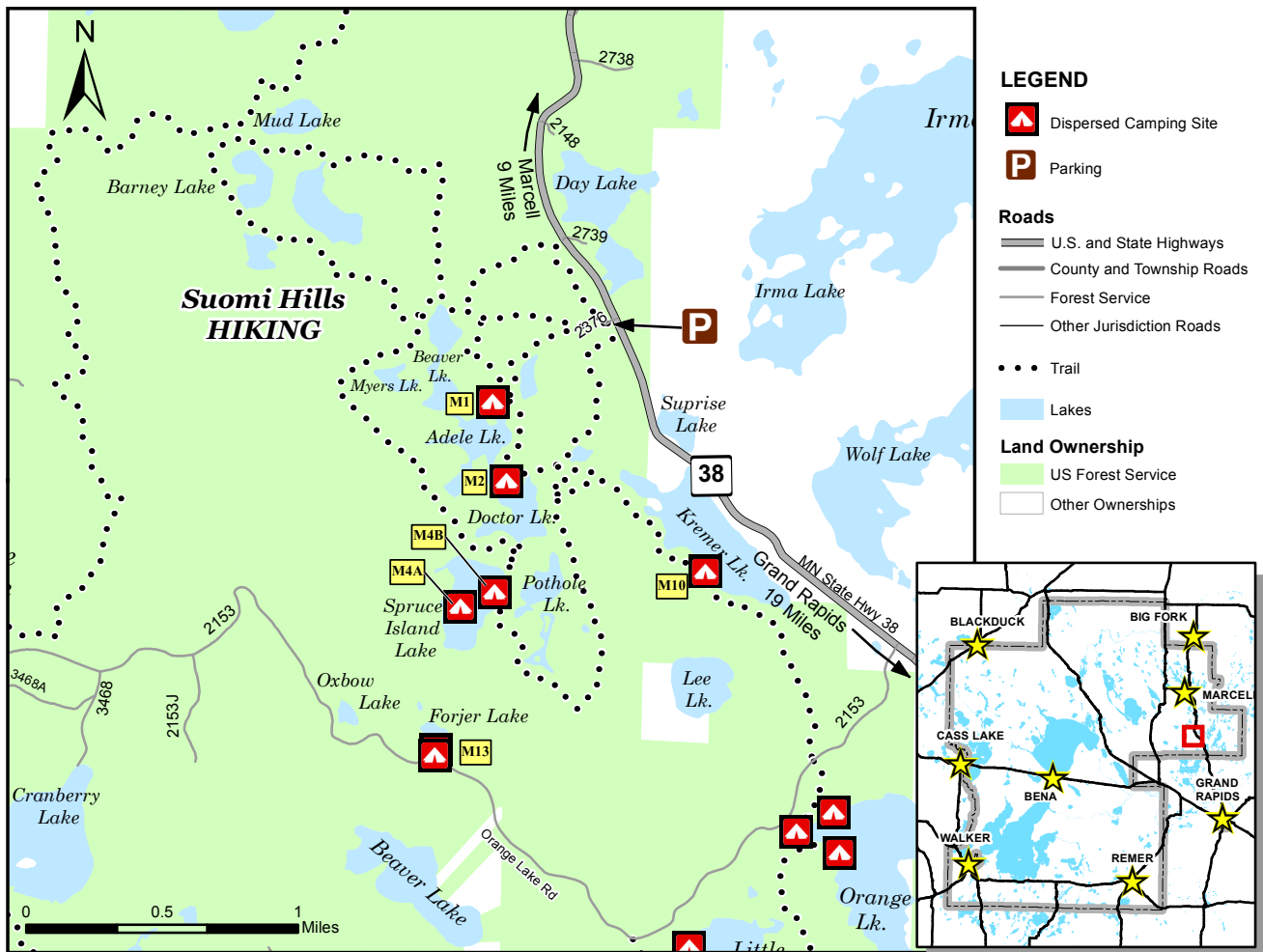
DISPERSED CAMPING

4/2018

MAP NO. 7

Dispersed Camping Site

	Longitude	Latitude	Toilet	Fire Pit	Number of Camping Sites	Activities
M1	93° 39' 12.170" W	47° 28' 20.761" N	None	Metal Grate	1 Site	
M2	93° 39' 8.105" W	47° 28' 5.608" N	Wilderness Pit	Metal Grate	1 Site	
M4A	93° 39' 20.760" W	47° 27' 41.403" N	None	Metal Grate	1 Site	
M4B	93° 39' 11.101" W	47° 27' 44.211" N	None	Metal Grate	1 Site	
M10	93° 38' 11.600" W	47° 27' 48.514" N	None	Metal Grate	1 Site	
M13	93° 39' 27.634" W	47° 27' 12.679" N	None	Metal Grate	2 Sites	



Hiking Hunting Fishing Canoeing Picnicking

For information on Leave No Trace, go to www.LNT.org or call 1-800-332-4100



Forest Service

Deer River Ranger District
 1235 Division Street Deer River, MN 56636
 Voice: (218) 246-2123 Fax: (218) 246-9743
www.fs.usda.gov/Chippewa

The USDA Forest Service makes no warranty, expressed or implied regarding the data displayed on this map, and reserves the right to correct, update, modify, or replace this information without notification.

USDA is an equal opportunity provider, employer, and lender.

Marcell Area

7 M1 Adele Lake ★ 4



Spacious, mix of sun and shade with ample space. Limited views with shoreline access to semi-swimmable water but great access to the Suomi Hills hiking trail system.

- 93° 39' 12.170" W 47° 28' 20.761" N
- If gate is closed for season, hike in from car parking is **.50 miles**.
- Space for several tents or camper.
- Yes, rock fire ring and a picnic table.



7 M2 Doctor Lake ★ 5



Very scenic campsite beneath mature pines on the beautifully swimmable shoreline of Doctor Lake. Nice, open double track hiking trail approach on Suomi Hills trail system.

- 93° 39' 8.105" W 47° 28' 5.608" N
- Hike in from nearest parking near Adele Lake is **.50 miles**.
- Yes, metal fire grate and picnic table.
- Good trees for hammocks.



7 M4A Spruce Lake Island ★ ?



Scenic, coniferous forested island on Spruce Lake. Remote and private.

- 93° 39' 20.760" W 47° 27' 41.403" N
- Paddle and portage is under one mile. Put-in at Adele Lake.
- Yes, metal fire grate. No toilet.



7 M4B Spruce Lake ★ 4



Scenic and remote campsite on a wooded point with swimmable lake access, with some vegetation. Nice spot, but there are better options with a less difficult approach. Lengthy but enjoyable hike in.

- 93° 39' 11.101" W 47° 27' 44.211" N
- Hike in from nearest parking near Adele Lake is **2.4 miles**. On intermediate, open double track Suomi Hills hiking trail system.
- Space for 3-4 backpacking tents.
- Yes, metal grate fire ring and log bench.



7 M10 Kremer Lake ★ 5



Wonderful, open view of beautiful Kremer Lake. Deep, clean water with sandy shoreline bottom. An enjoyable hike-in but loses a feel of remoteness with road presence nearby.

- 93° 38' 11.600" W 47° 27' 48.514" N
- Hike in from car parking is **~ 1.8 miles**.
- Scenic hike on open, double track Suomi Hills hiking trail system.
- Room for 4-5 backpacking tents. Trees for hammocks.
- Yes, metal fire grate. Also log benches.
- Might be possible to hear noise from highway across the lake.



7 M13 Forjer Lake ★ 3



Moderately sized wooded opening with from the tent views of little Forjer Lake. Good water for treating or swimming.

- 93° 39' 27.634" W 47° 27' 12.679" N
- Easy approach on Forest Road 2153, Orange Lake Road.
- Requires a walk-in from parking area of **~50 yards**.
- Space for 2-3 backpacking tents.
- Rock fire ring with two wooden benches.





United States Department of Agriculture

Chippewa National Forest

RECREATION OPPORTUNITY GUIDE

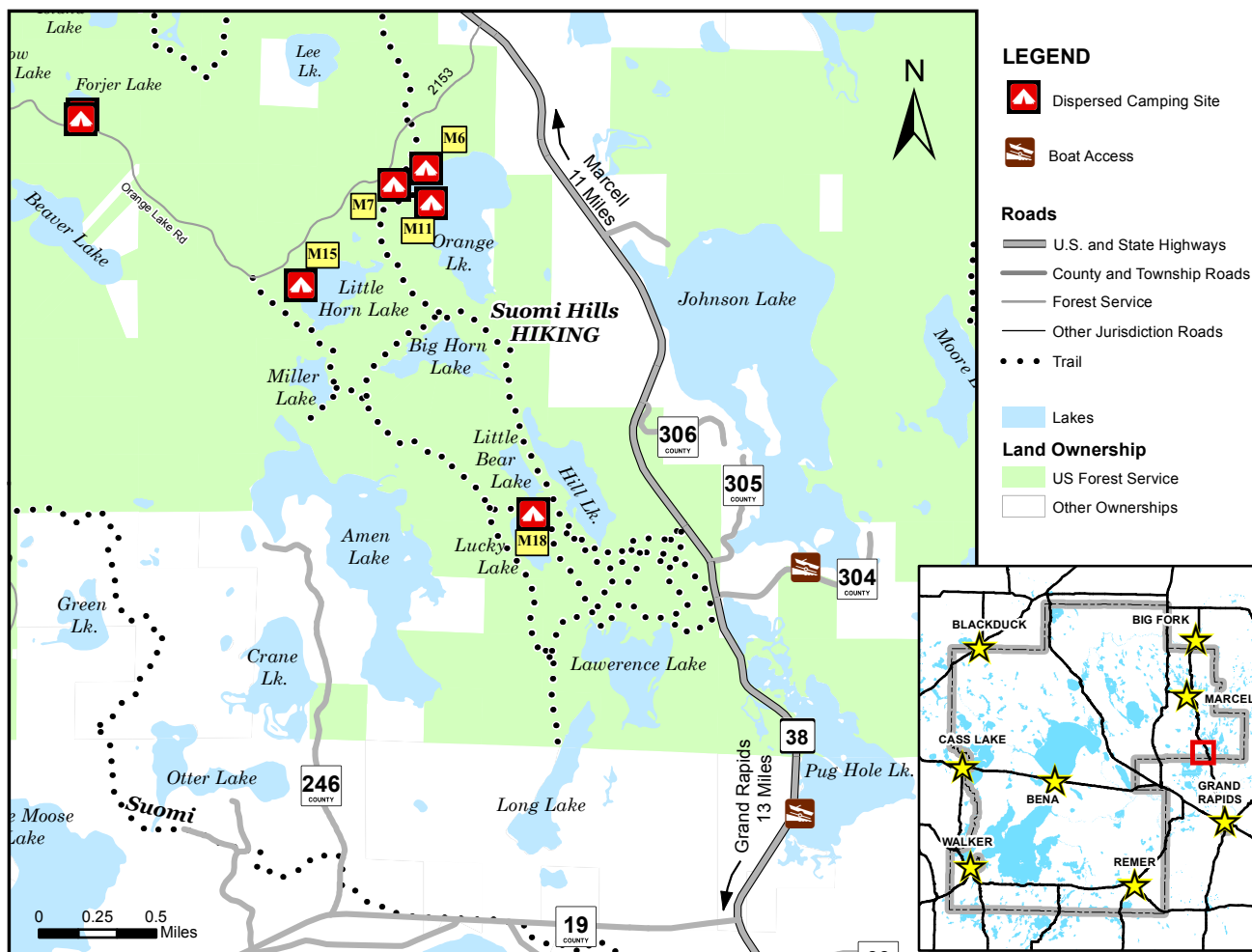
DISPERSED CAMPING

4/2018

MAP NO. 8

Dispersed Camping Site

	Longitude	Latitude	Toilet	Fire Pit	Number of Camping Sites	Activities
M6	93° 37' 34.763" W	47° 27' 2.395" N	None	Metal Grate	1 Site	
M7	93° 37' 45.180" W	47° 26' 58.691" N	None	Metal Grate	1 Site	
M11	93° 37' 32.876" W	47° 26' 54.663" N	None	Metal Grate	1 Site	
M15	93° 38' 15.251" W	47° 26' 36.225" N	None	Metal Grate	1 Site	
M18	93° 36' 58.842" W	47° 25' 45.931" N	None	Metal Grate	1 Site	



Hiking Hunting Fishing Canoeing Picnicking

For information on Leave No Trace, go to www.LNT.org or call 1-800-332-4100



Forest Service

Deer River Ranger District
 1235 Division Street Deer River, MN 56636
 Voice: (218) 246-2123 Fax: (218) 246-9743
www.fs.usda.gov/Chippewa

The USDA Forest Service makes no warranty, expressed or implied regarding the data displayed on this map, and reserves the right to correct, update, modify, or replace this information without notification.

USDA is an equal opportunity provider, employer, and lender.

Marcell Area

8 M6 Orange Lake ★ 0



This campsite has gone feral. Fire ring, tent space, and approach trail are all overgrown to the point of not recommending use.

- 93° 37' 34.763" W 47° 27' 2.395" N



8 M7 Orange Lake ★ 3



Scenic wooded glen with views of little Orange Lake. Good shoreline access, with reasonable swimming opportunity.

- 93° 37' 45.180" W 47° 26' 58.691" N
- Easy access from Forest Road 2153.
- Walk in from car parking is ~ **50 yards**.
- No toilet. Yes, metal fire grate and picnic table.



8 M11 Orange Lake ★ 2



Remote site; a bit too distant for the moderate quality. Wooded shoreline with thick aquatic vegetation, not suitable for swimming.

- 93° 38' 32.876" W 47° 26' 54.663" N
- Hike in from car parking is **.30 miles**.
- Trailhead parking from either CR2153.
- Grassy, or pine needle matted space for several backpacking tents.
- Includes an eroded brick fire pit.



8 M15 Little Horn Lake ★ 3



A grassy opening with room for a backpacking tent or two with nice view of lake.

- 93° 38' 15.251" W 47° 26' 36.225" N
- Hike in from car parking is **.09 miles**.
- Trailhead parking from Forest Road 2153, look for the metal sign. Beware of false trailheads nearby.
- No toilet. Yes, metal fire grate.



8 M18 Lucky Lake ★ 1



Unattractive, tall grassy space alongside trail on Suomi Hills hiking trail system. Not adjacent to the lake. Descend spur trail to steep shoreline.

- 93° 36' 58.842" W 47° 25' 45.931" N
- Hike in from car parking is **.50 miles**.
- Overgrown rock fire ring.
- Overgrown grassy space could have room for 2-3 backpacking tents.
- This is a designated trout lake.





United States Department of Agriculture

Chippewa National Forest

RECREATION OPPORTUNITY GUIDE

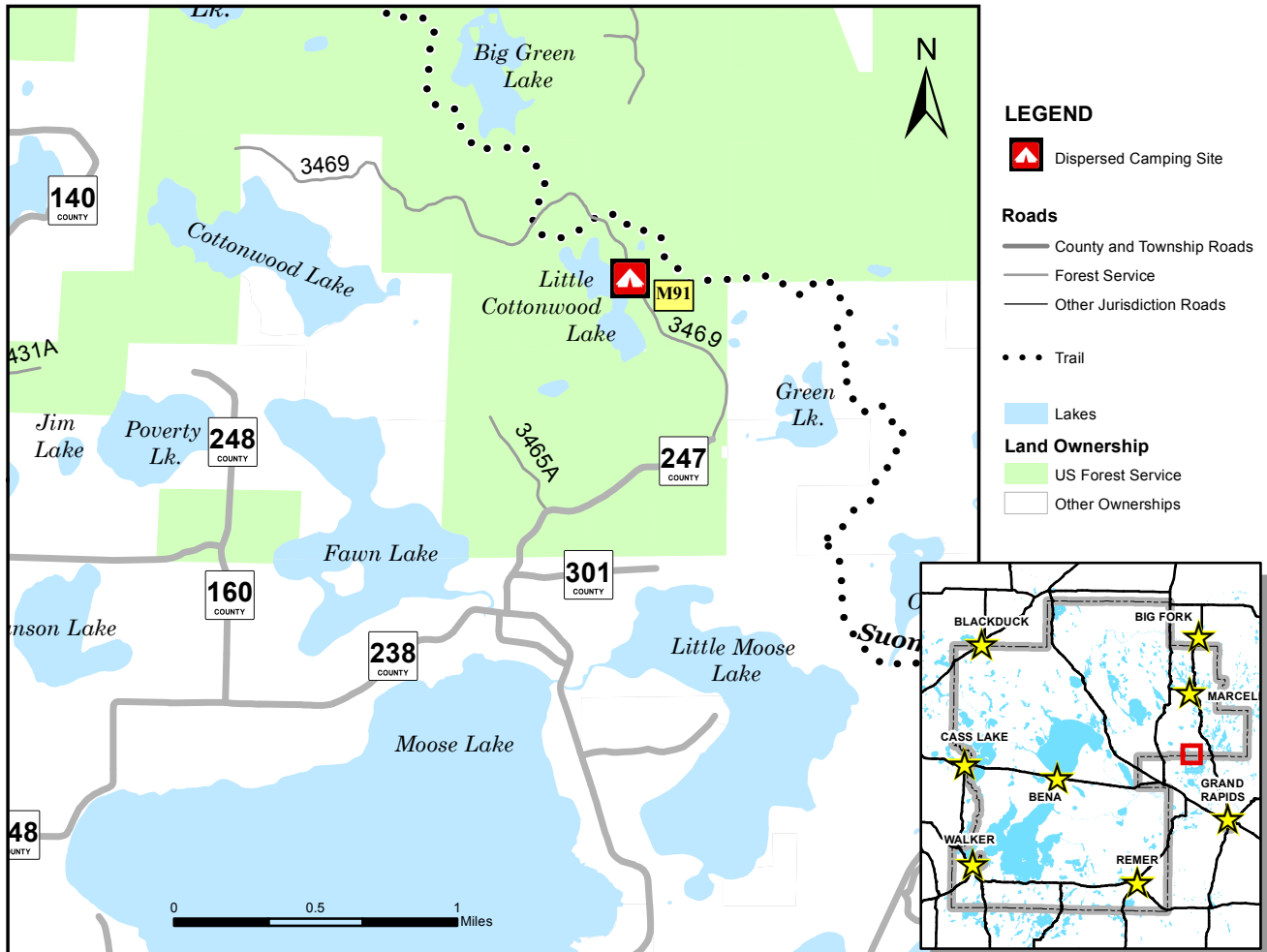
DISPERSED CAMPING

4/2018

MAP NO. 9

Dispersed Camping Site

	Longitude	Latitude	Toilet	Fire Pit	Number of Camping Sites	Activities
M91	93° 40' 13.925" W	47° 25' 45.808" N	None	Rock	1 Site	



Hunting Fishing Boating Picnicking

For information on Leave No Trace, go to www.LNT.org or call 1-800-332-4100



Forest Service

Deer River Ranger District
1235 Division Street Deer River, MN 56636
Voice: (218) 246-2123 Fax: (218) 246-9743
www.fs.usda.gov/Chippewa

The USDA Forest Service makes no warranty, expressed or implied regarding the data displayed on this map, and reserves the right to correct, update, modify, or replace this information without notification.

USDA is an equal opportunity provider, employer, and lender.

Marcell Area

9 M91 Li'l Cottonwood Lake ★ 2



Small grassy campsite without much view of lake. Weedy and vegetated shoreline, not the best for swimming. Remote and private.

- 93° 40' 13.925" W 47° 25' 45.808" N
- Nice, long approach on CR247 and Forest Road 3469.
- Space for a backpacking tent or two. Limited parking.
- No toilet. Yes, rock fire ring and makeshift dock.





United States Department of Agriculture

Chippewa National Forest

RECREATION OPPORTUNITY GUIDE

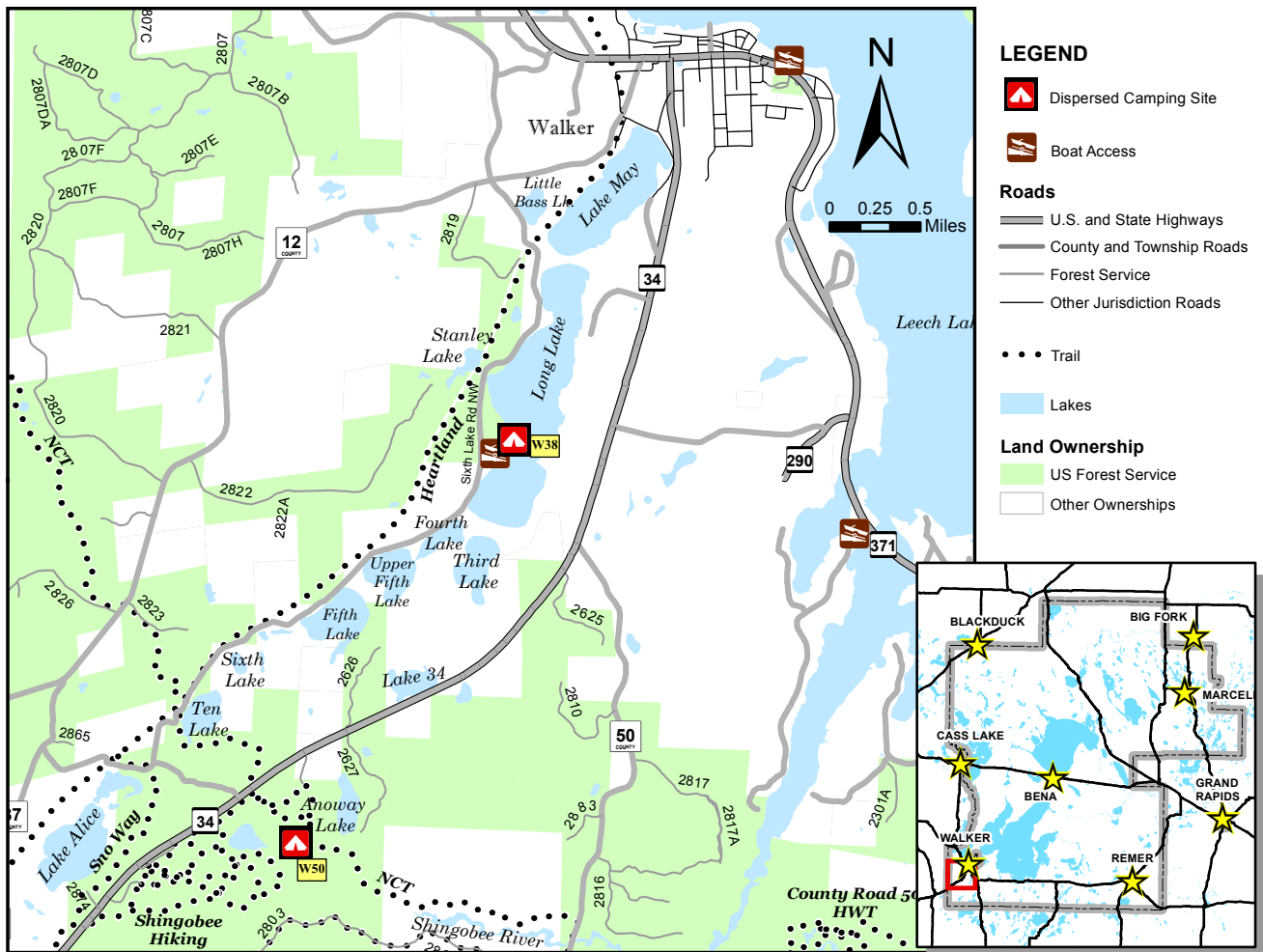
DISPERSED CAMPING

4/2018

MAP NO. 19

Dispersed Camping Site

	Longitude	Latitude	Toilet	Fire Pit	Number of Camping Sites	Activities
W38	94° 36' 15.291" W	47° 4' 14.553" N	None	Other	1 Site	
W50	94° 37' 43.610" W	47° 2' 17.263" N	None	Metal Grate	1 Site	



- Hiking
- Fishing
- Canoeing
- Hunting
- Picnicking
- Boating
- X-County Skiing
- Bird Watching

For information on Leave No Trace, go to www.LNT.org or call 1-800-332-4100



Forest Service

Walker Ranger District
 201 Minnesota Ave, East Walker, MN 56484
 Voice: (218) 547-1044 Fax: (218) 547-3260
www.fs.usda.gov/Chippewa

The USDA Forest Service makes no warranty, expressed or implied regarding the data displayed on this map, and reserves the right to correct, update, modify, or replace this information without notification.

USDA is an equal opportunity provider, employer, and lender.

Walker Area

19 W38 Long Lake ★ 4



Quite scenic wooded peninsula on developed Long Lake. Not very remote as a hike-in from the parking area of a public boat launch. Lots of sandy bottom lake around shoreline. Seems popular, and some mess may be left behind.

- 94° 36' 15.291" W 47° 4' 14.553" N
- Plenty of space for multiple tents and ample parking.
- No toilet. Yes, rock fire ring.
- Paddle-in approaches from elsewhere on Long Lake possible.



19 W50 Anoway Lake ★ 2



A campsite off the North Country Trail, deep in the woods amidst the pines. A couple of tent sites in the trees with an open grassy overflow nearby. A short hike away from natural water source.

- 94° 37' 43.610" W 47° 2' 17.263" N
- Hike in from car parking on nearby forest roads is **.5 miles**.
- Access to NCT and other Shingobee Recreation Area trail network.
- Includes metal/cinder block fire pit, picnic table and pit toilet.





United States Department of Agriculture

Chippewa National Forest

RECREATION OPPORTUNITY GUIDE

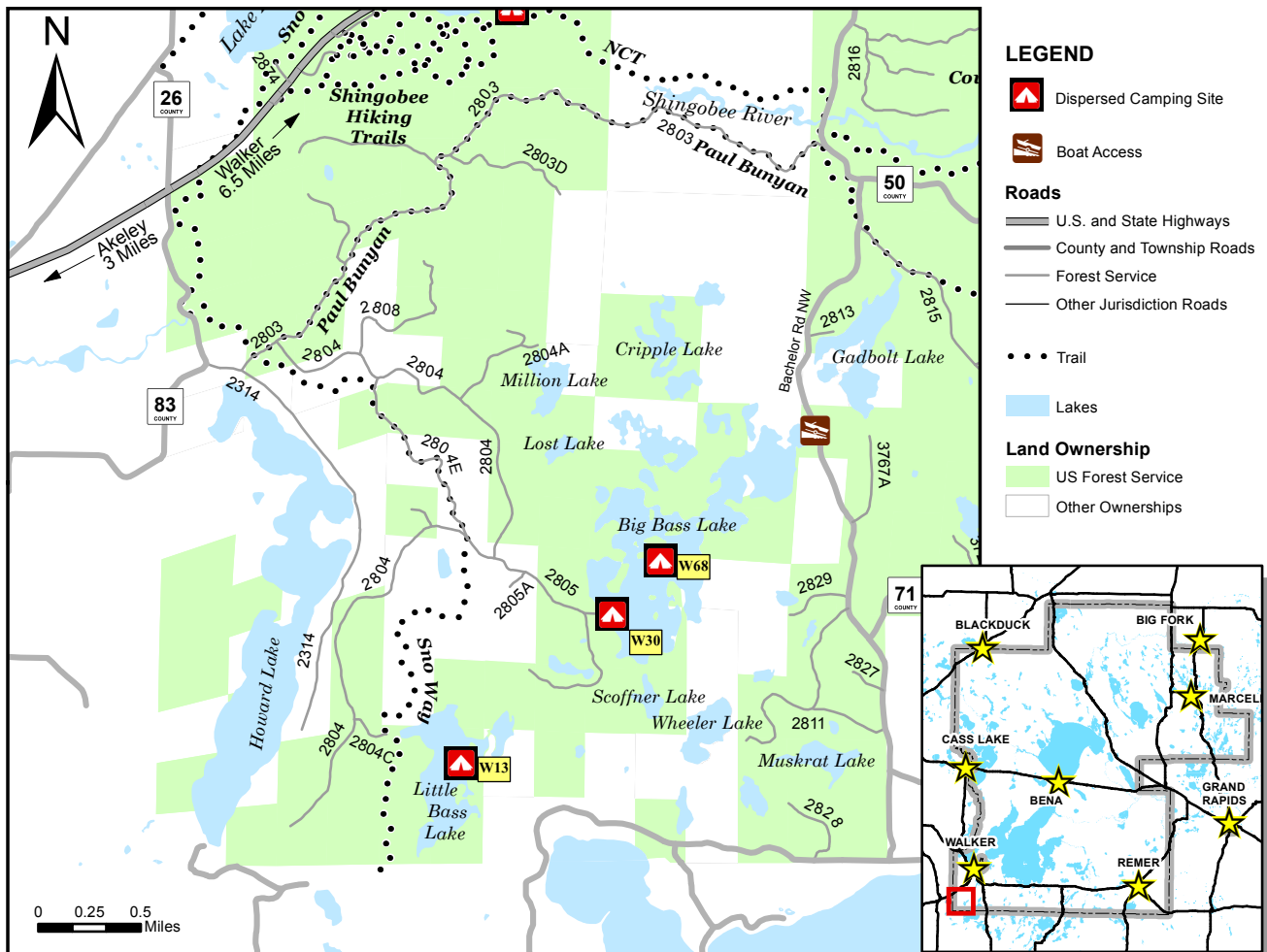
DISPERSED CAMPING

4/2018

MAP NO. 20

Dispersed Camping Site

	Longitude	Latitude	Toilet	Fire Pit	Number of Camping Sites	Activities
W13	94° 37' 56.751" W	46° 59' 4.705" N	None	None	1 Site	
W30	94° 37' 1.447" W	46° 59' 43.395" N	None	Rock	1 Site	
W68	94° 36' 44.112" W	46° 59' 57.295" N	Wilderness Pit	Rock	1 Site	



Fishing Hunting Canoeing Boating Picnicking

For information on Leave No Trace, go to www.LNT.org or call 1-800-332-4100



Forest Service

Walker Ranger District
 201 Minnesota Ave, East Walker, MN 56484
 Voice: (218) 547-1044 Fax: (218) 547-3260
www.fs.usda.gov/Chippewa

The USDA Forest Service makes no warranty, expressed or implied regarding the data displayed on this map, and reserves the right to correct, update, modify, or replace this information without notification.

USDA is an equal opportunity provider, employer, and lender.

20 W13 Little Bass Lake ★ 4



A scenic two-combo campsite on a isle of white pines on a remote, undeveloped lake. A rocky, grassy landing with good water access still suitable for swimming. Tent sites are slightly sloped.

- 94° 37' 56.751" W 46° 59' 4.705" N
- Paddle approach is **.35 miles** from launch on northwest bay.
- Includes rock fire pit, picnic table, log chunk furniture.

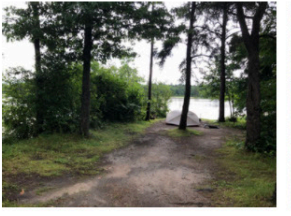


20 W30 Big Bass Lake ★ 4



Quite remote and very scenic wood sheltered point on an attractive, mostly undeveloped lake. Paddle-in access from elsewhere on the lake.

- 94° 37' 1.447" W 46° 59' 43.395" N
- Reasonable quality approach on Forest Roads 2804 and 2805.
- Space for several tents or a camper, trees for hammocks.
- Yes, toilet and rock fire ring.



20 W68 Big Bass Lake ★ 3



Space for several tents on a wooded and brushy point but scenic views remain. A sloped boat landing to the water without sand.

- 94° 36' 44.112" W 46° 59' 57.295" N
- Paddle approach of 1 mile from public landing on northeast of lake.
- Includes a rock fire ring, picnic table and pit toilet.





United States Department of Agriculture

Chippewa National Forest

RECREATION OPPORTUNITY GUIDE

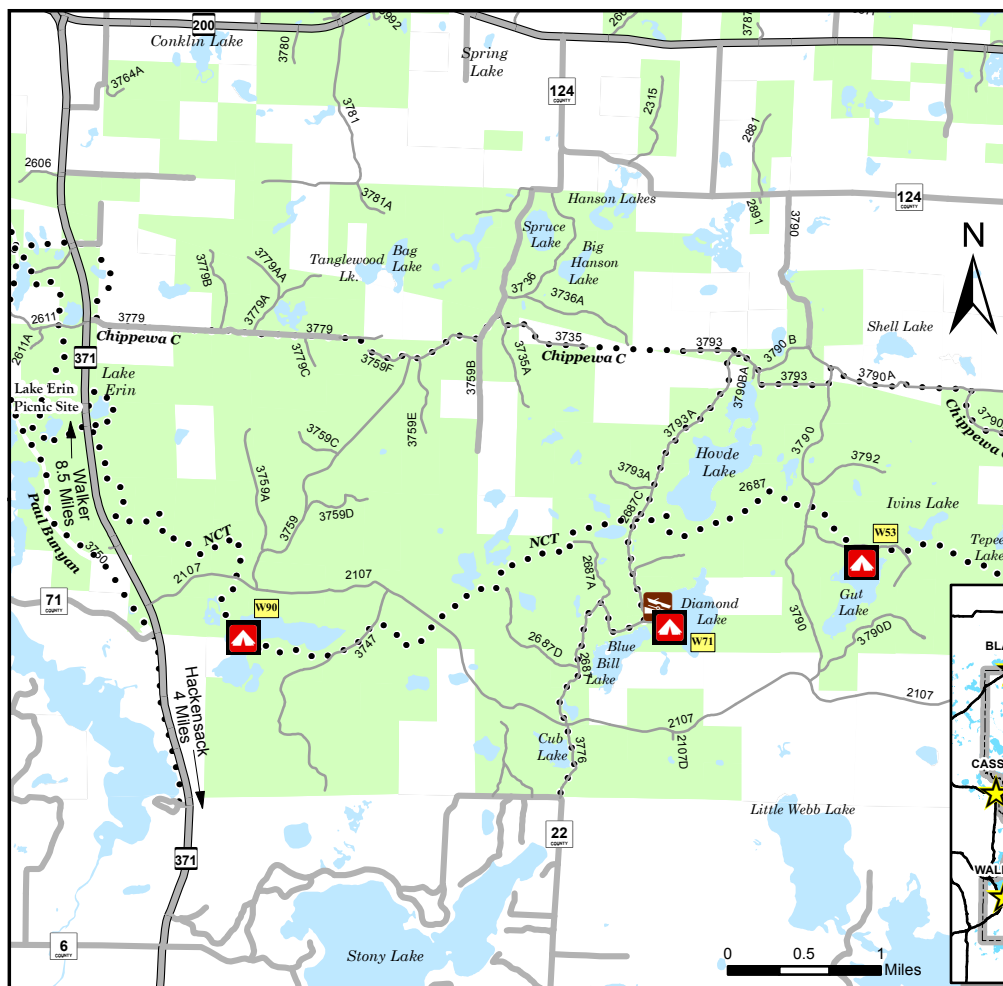
DISPERSED CAMPING

4/2018

MAP NO. 21

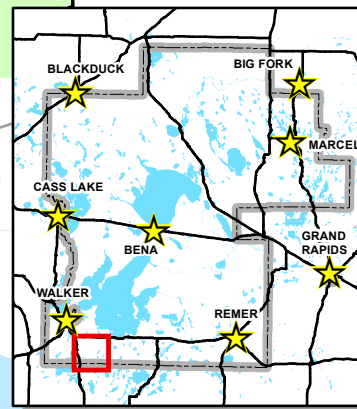
Dispersed Camping Site

	Longitude	Latitude	Toilet	Fire Pit	Number of Camping Sites	Activities
W53	94° 25' 40.525" W	47° 0' 10.463" N	Wilderness Pit	Other	1 Site	
W71	94° 27' 15.960" W	46° 59' 47.362" N	Wilderness Pit	Rock	1 Site	
W90	94° 30' 48.886" W	46° 59' 40.793" N	Wilderness Pit	Metal Grate	1 Site	



LEGEND

- Dispersed Camping Site
- Boat Access
- Roads**
 - U.S. and State Highways
 - County and Township Roads
 - Forest Service
 - Other Jurisdiction Roads
- Trail
- Lakes
- Land Ownership**
 - US Forest Service
 - Other Ownerships



Hiking Fishing Canoeing Picnicking Wildlife Viewing For information on Leave No Trace, go to www.LNT.org or call 1-800-332-4100



Forest Service

Walker Ranger District
 201 Minnesota Ave, East Walker, MN 56484
 Voice: (218) 547-1044 Fax: (218) 547-3260
www.fs.usda.gov/Chippewa

The USDA Forest Service makes no warranty, expressed or implied regarding the data displayed on this map, and reserves the right to correct, update, modify, or replace this information without notification.

USDA is an equal opportunity provider, employer, and lender.

21 W53 Gut Lake ★ 4



A grassy open space for several backpacking tents beneath mature red pines with view of Gut Lake. Good hammock spots. Good water access with wading and swimming possible.

- 94° 25' 40.525" W 47° 0' 10.463" N
- Hike in from car parking is **.5 miles**.
- Nearest trailhead parking on Forest Road 3790.
- Is located on the North Country National Scenic Trail.
- Amenities include metal fire grate, pit toilet and bench/table furniture.



21 W71 Diamond Lake ★ 3



A shaded space under trees directly adjacent a gravel road turnaround. Limited views of the lake with a staircase descent to not very swimmable waters.

- 94° 27' 15.960" W 46° 59' 47.362" N
- Well graded approach until final stretch on Forest Road 2867.
- Includes pit toilet and metal fire grate.



21 W90 Woodtick #1 ★ 3



A very distinct campsite on top of a hill, surrounded by mixed forest types and attractive views of surrounding ponds and prairie. Space for several backpacking tents. Access to natural water source is limited. Sounds from nearby highway are audible.

- 94° 30' 48.886" W 46° 59' 40.793" N
- Hike in from car parking on Forest Road 2107 is **.6 miles**.
- Is located on the North Country National Scenic Trail.
- Amenities include metal fire pit, toilet and table/bench furniture.





United States Department of Agriculture

Chippewa National Forest

RECREATION OPPORTUNITY GUIDE

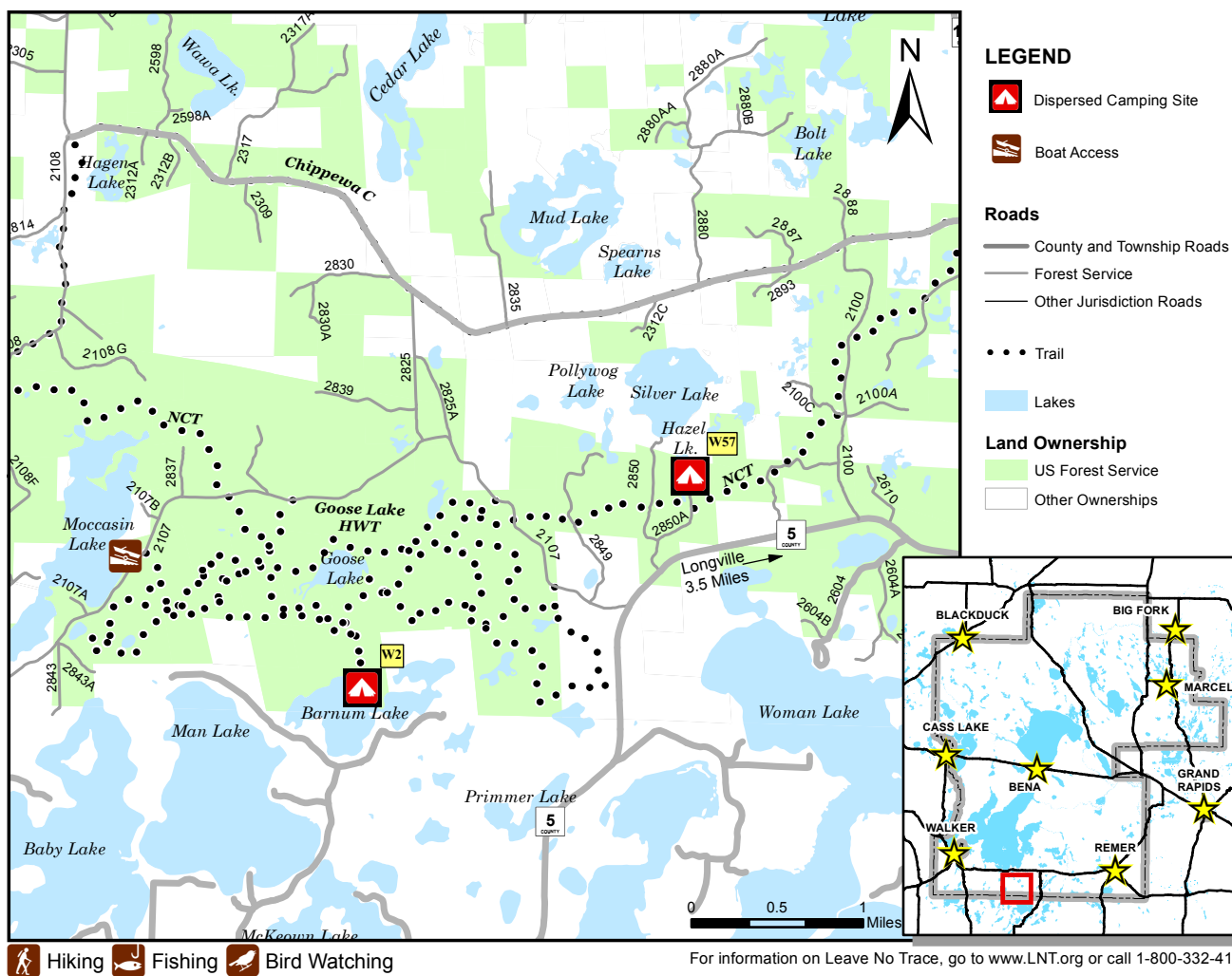
DISPERSED CAMPING

4/2018

MAP NO. 22

Dispersed Camping Site

	Longitude	Latitude	Toilet	Fire Pit	Number of Camping Sites	Activities
W2	94° 19' 37.322" W	46° 58' 53.712" N	None	Rock	1 Site	
W57	94° 17' 12.955" W	46° 59' 59.991" N	None	Rock	1 Site	



Forest Service

Walker Ranger District
 201 Minnesota Ave, East Walker, MN 56484
 Voice: (218) 547-1044 Fax: (218) 547-3260
www.fs.usda.gov/Chippewa

The USDA Forest Service makes no warranty, expressed or implied regarding the data displayed on this map, and reserves the right to correct, update, modify, or replace this information without notification.

USDA is an equal opportunity provider, employer, and lender.

22 W2 Barnum Lake ★ 1



Hike in on Goose Lake Hunter Walking Trail system to a mature pine grove situated atop a tall lakeside ridge. Little use is evident and this site is going feral. Limited views and lake access. Vegetation growing tall.

- 94° 19' 37.322" W 46° 58' 53.712" N
- Hike in from car parking on Forest Road 2107 is **1.98 miles**.
- Includes metal fire ring.
- Would be better with hammocks.



22 W3 Goose Lake ★ 1



A very primitive, cleared, grassy space to pitch a tent - as marked on the local map of the Goose Lake Hunter Walking Trail system. Moderate view of a vegetated lake, with limited water access.

- 94°19'43.62"W 46°59'24.55"N
- Hike in from car parking on Forest Road 2107 is **1 mile**.
- No amenities.
- Not listed in 'Site Map Index'.



22 W57 Hazel Lake ★ 4-5



Spacious and shaded wooded openings on a designated trout lake. Nice, developed boat landing. Campsite right on shoreline with nice views.

- 94° 17' 12.955" W 46° 59' 59.991" N
- Almost impassable without AWD or OHV on Forest Road 2850A.
- Is located on the North Country National Scenic Trail.
- Includes pit toilet and metal fire grate.





United States Department of Agriculture

Chippewa National Forest

RECREATION OPPORTUNITY GUIDE

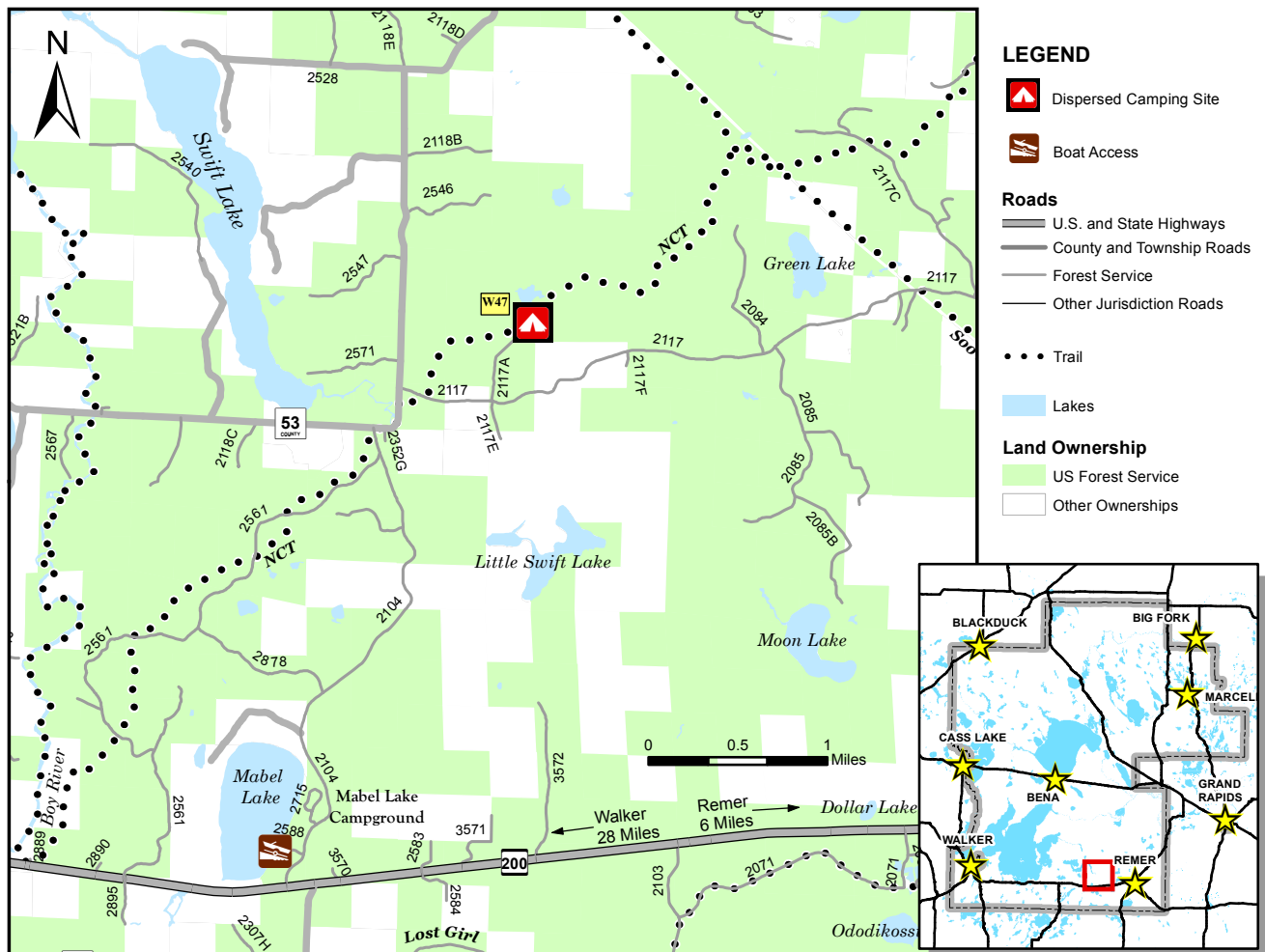
DISPERSED CAMPING

4/2018

MAP NO. 23

Dispersed Camping Site

	Longitude	Latitude	Toilet	Fire Pit	Number of Camping Sites	Activities
W47	94° 2' 47.835" W	47° 5' 19.174" N	Wilderness Pit	None	1 Site	



Hiking

For information on Leave No Trace, go to www.LNT.org or call 1-800-332-4100



Forest Service

Walker Ranger District
 201 Minnesota Ave, East Walker, MN 56484
 Voice: (218) 547-1044 Fax: (218) 547-3260
www.fs.usda.gov/Chippewa

The USDA Forest Service makes no warranty, expressed or implied regarding the data displayed on this map, and reserves the right to correct, update, modify, or replace this information without notification.

USDA is an equal opportunity provider, employer, and lender.

Walker Area

23 **W47** Old Pines Camp ★ 1



An offering for North Country Trail backpackers who need the pit stop - this fairly unattractive does have space to pitch a few tents but not much else going for it. Poor views, poor access to water and a mediocre experience on the approach hike.

- 94° 2' 47.835" W 47° 5' 19.174" N
- Hike in from car parking on Forest Road 2117.
- Is not drive-in accessible.
- Is located on the North Country National Scenic Trail.
- Amenities include metal/cinder block fire pit, pit toilet and bench/table.



★ **MN**  **CAMP GUIDE** ★

2020

Explore the digital maps and other features on
www.minnesotacampguide.com

HAPPY CAMPING.

